



Trevalli Mining Corporation
2300 – 1177 West Hastings Street
Vancouver, British Columbia, CANADA V6E 2K3
Telephone: (604) 488-1661 ♦ Facsimile: (604) 408-7499
www.trevalli.com

NEWS RELEASE

Trevalli intersects multiple zones of thick massive sulphide mineralization at Stratmat Deposit in New Brunswick, Canada

Highlights include:

13.3 metres at 7.54% zinc, 2.48% lead, 0.43% copper, 72.4 g/t silver and 0.93 g/t gold

14 metres at 5% zinc, 1.8% lead, 0.23% copper, 58.1 g/t silver and 1.23 g/t gold

TV-NR-12-04

February 6, 2012

Vancouver, British Columbia...Trevalli Mining Corporation (“Trevalli” or the “Company”) (TSX: TV; BVL: TV; OTCQX: TREVF; Frankfurt: 4TI) is pleased to announce that recent diamond drilling at the Stratmat zinc-lead-silver-copper deposit, in the Bathurst Mining Camp of northern New Brunswick, has confirmed the presence of extensive massive sulphide mineralization. Results indicate a new, wide zone of near-surface (potentially open pitable) mineralization containing significant zinc, lead, copper, silver and gold concentrations, that also remains open for expansion along strike and at depth (Table 1 & Figure 1).

The ongoing planned 5,000-metre drill program is intended to convert a significant portion of the estimated independent National Instrument 43-101 compliant inferred resource of **5.5 million tonnes* grading 6.11% Zinc, 2.59% Lead, 0.40% Copper, 54.21 g/t Silver, and 0.62 g/t Gold**, to a higher confidence category.

* NI 43-101 compliant resource estimate by Wardrop Engineering Inc., November, 2008

Trevalli is encouraged by the pervasiveness of the mineralized zone and anticipates zinc-lead-copper-silver-gold mineralization to increase with depth: The deepest intercept (ST-723) contains an impressive 69.38 g/t silver within which a section returned 2.36% copper, demonstrating a positive change of geologic environment. Please refer to Figure 1 for drill hole intercept locations. As well as providing samples for metallurgical testing, this drill program has established the continuity of the Main Zone Footwall lens, which is expected to add new tonnes to the resource base.

Drill Hole	From (m)	To (m)	Core Length	g/t Au	g/t Ag	% Cu	% Zn	% Pb	Zone
ST-711	178.00	192.00	15.00	0.16	7.45	0.59	0.52	0.15	Main
<i>includes:</i>	179.00	184.00	5.00	0.27	11.95	1.22	0.62	0.14	
	194.59	195.30	0.71	0.04	22.00	0.25	3.93	1.85	Main FW
ST-712	115.92	129.24	13.32	0.93	72.47	0.43	7.54	2.48	Main
	139.30	149.91	10.61	0.92	36.50	0.16	3.82	1.05	Main FW
ST-713	68.63	84.17	4.69	0.01	5.80	0.03	0.91	0.39	Main
ST-714	160.42	172.00	12.58	0.09	4.19	0.74	0.11	0.04	Main
<i>includes:</i>	166.00	168.00	2.00	0.15	11.35	2.26	0.13	0.03	
	188.88	190.35	1.47	0.24	134.78	0.41	4.99	2.13	Main FW
ST-715	139.00	148.16	9.16	0.24	25.38	0.14	5.30	1.56	Main
ST-716	110.25	137.00	26.75	0.45	22.57	0.33	2.31	0.83	Main
<i>includes:</i>	131.00	137.00	6.00	0.65	36.75	0.09	5.36	2.30	
	169.22	171.64	2.42	1.11	56.50	0.32	7.14	1.62	Main FW
ST-717	47.18	74.50	27.32	1.07	50.27	0.21	4.02	1.49	Main
<i>includes:</i>	60.50	74.50	14.00	1.23	58.18	0.23	5.02	1.80	
ST-717	86.15	88.92	2.77	0.20	7.27	1.72	0.25	0.04	Main FW
ST-718	45.13	63.50	18.37	1.04	46.35	0.20	4.47	1.48	Main
ST-719	104.79	105.73	0.94	0.64	27.00	0.33	2.43	0.72	Main
ST-720	108.40	112.27	3.87	0.02	54.20	0.11	2.39	0.88	Main
	126.43	127.16	0.73	0.27	27.00	0.11	2.28	1.26	Main FW
ST-721	259.64	279.23	19.59	0.03	0.59	0.15	0.03	0.01	Main
ST-722	234.63	248.00	13.37	0.09	2.41	0.12	0.18	0.05	Main
ST-723	249.33	257.34	8.01	0.14	69.38	0.35	0.34	0.05	Main
<i>includes:</i>	256.55	257.34	0.79	0.87	16.00	2.36	0.22	0.02	

Table 1: Stratmat drill results

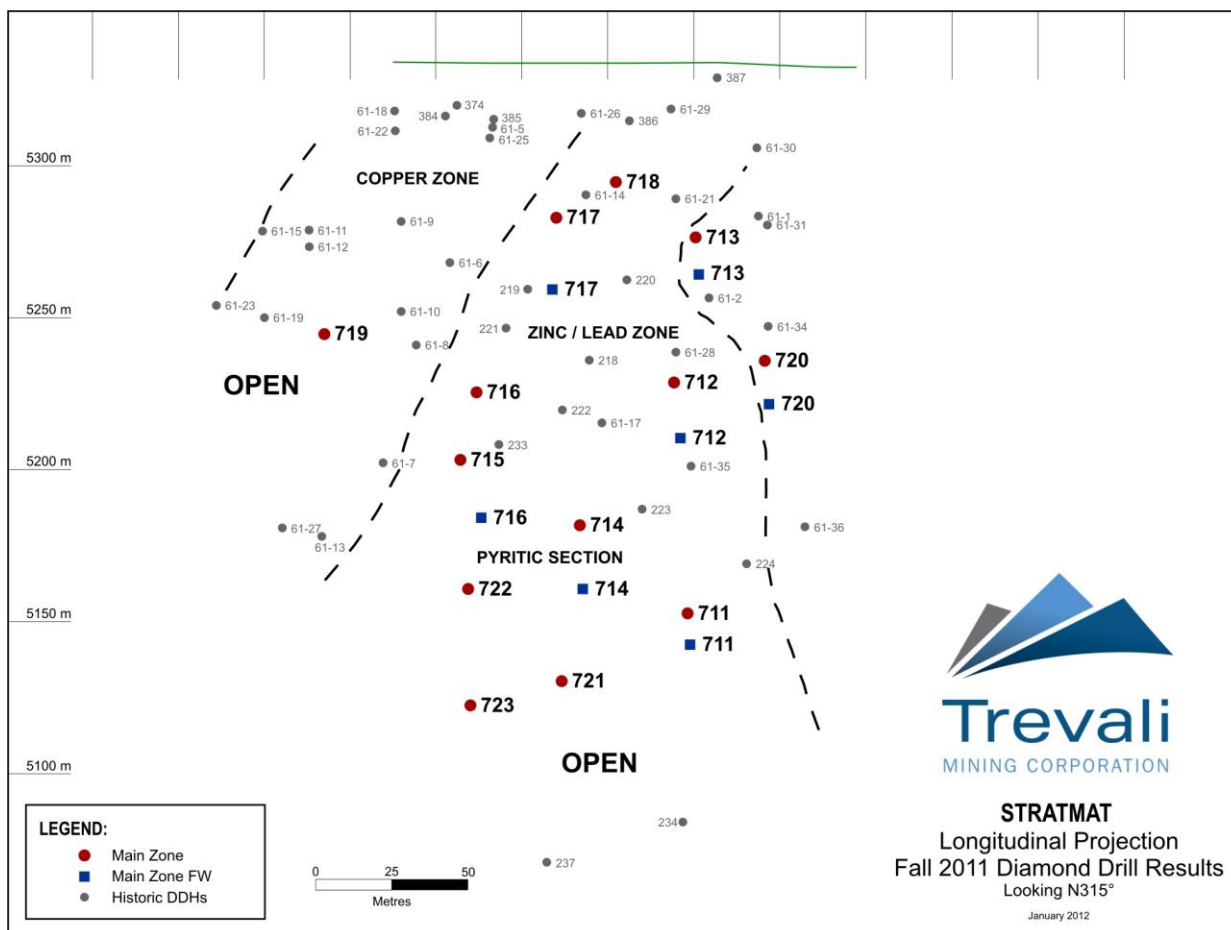


Figure 1: Stratmat Main Zone Longitudinal Projection highlighting drilling intercepts

The Stratmat diamond drill program is continuing through February 2012. The aim of this next phase is to gain confidence in the S1 and Central resource zones, which are situated west of the Main Zone as well as selected deep targets.

HALFMILE AND STRATMAT DEPOSITS

The Halfmile and Stratmat Deposits are a multi-lens zinc-lead-silver-copper-gold rich volcanogenic massive sulphide (VMS) deposits located in the renowned Bathurst Mining Camp of northern New Brunswick in eastern Canada (Figure 2). They contain significant National Instrument 43-101 Resources – all of which remain open for expansion (Table 2):

Halfmile and Stratmat Deposit Resources					
	Tonnes	Zn%	Pb%	Cu%	Ag (g/t)
HALFMILE					
Indicated	6,262,043	8.13	2.58	0.22	30.78*
Inferred	6,078,200	6.69	1.83	0.14	20.51*
STRATMAT					
Inferred	5,524,500	6.11	2.59	0.40	54.21
Calculated by Tetra Tech Wardrop engineers and geologists using a 5% ZnEQ cutoff					
*Silver and gold not routinely analyzed for in historic drilling.					

Table 2: NI 43-101 Resource Estimates for Halfmile and Stratmat Deposits

An independent Preliminary Economic Assessment* from Tetra Tech Wardop engineering in September 2010 indicated a pre-tax Net Present Value (6%) of C\$343 million at metal prices of US\$1.03/lb Zinc, US\$3.03/lb Copper, US\$0.92/lb Lead and US\$15.08/oz Silver. The study did not take into account any potential gold credits.

*Mineral resources that are not mineral reserves do not have demonstrated economic viability.

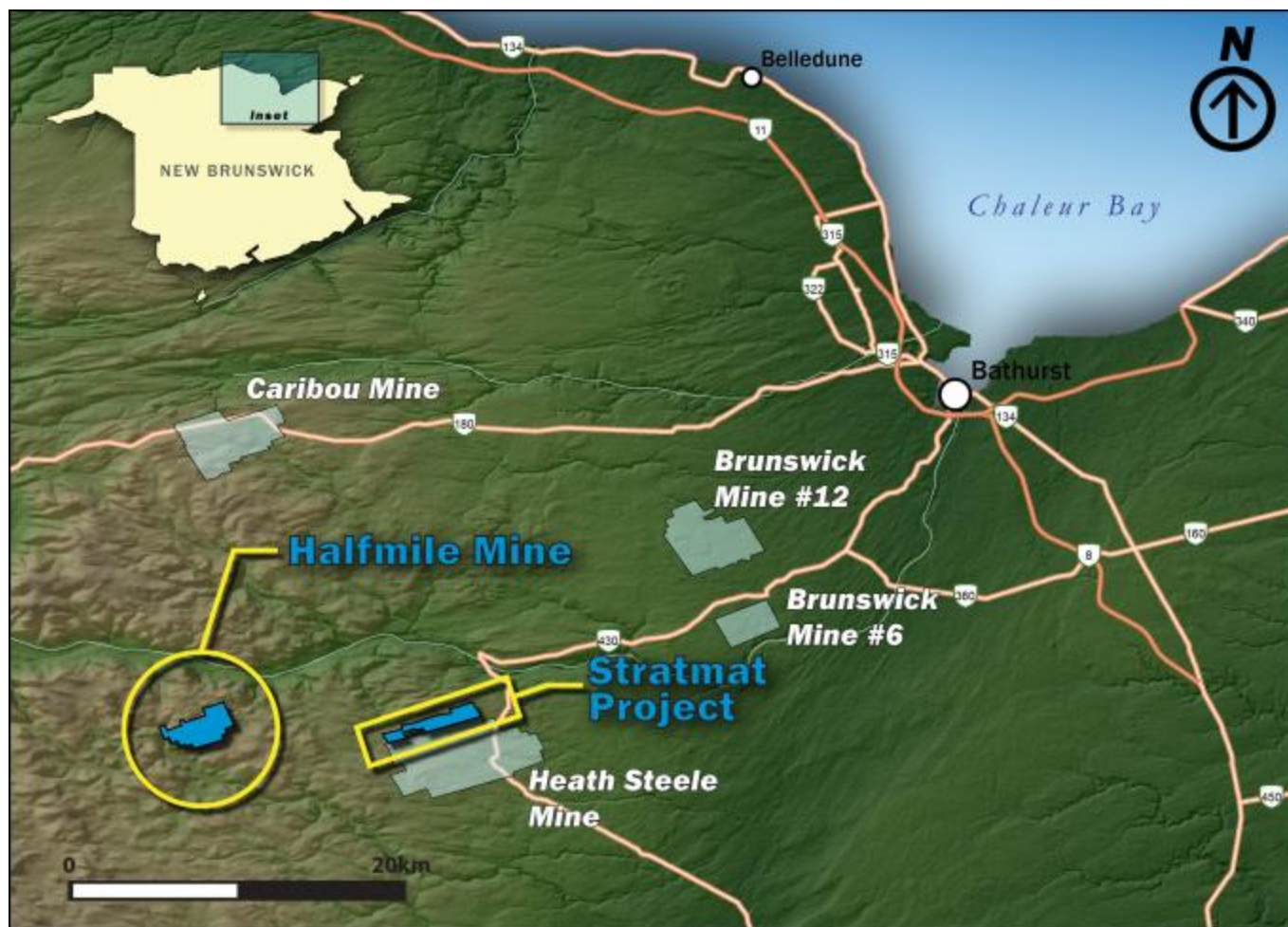


Figure 2: Stratmat deposit and Halfmile Mine location map, northeastern New Brunswick

ABOUT TREVALI MINING CORPORATION

Trevali has two advanced-stage polymetallic (zinc-lead-silver-copper) deposits in Canada and Peru – the Halfmile and Santander mine projects respectively. In Canada, Trevali owns the Halfmile Mine and Stratmat polymetallic deposit in the Bathurst Mining Camp of northern New Brunswick, and the past-producing Ruttan copper-zinc mine in northern Manitoba. Production from the Halfmile Mine commenced in early 2012 and will ramp up to a planned production rate of 2,000-tonnes-per-day.

In Peru, the Company has the Santander zinc-lead-silver mine project and the former-producing Huampar silver mine, both located in the Central Peruvian Polymetallic Belt. Mine commissioning is anticipated to commence at the Santander operation in mid-2012 with ramp up to full 2,000-tonne-per-day production

to follow shortly thereafter. Additionally through its wholly-owned subsidiary Trevali Renewable Energy Inc., Trevali is undertaking a significant upgrade of its wholly-owned Tingo run-of-river hydroelectric generating facility along with transmission line upgrades and extensions to allow, in addition to supplying power to the mining operation on the property, the potential sale of surplus power into the Peruvian National Energy Grid.

The common shares of Trevali are listed on the TSX (symbol TV), the OTCQX (symbol TREVF) and on the Lima Stock Exchange (symbol TV). Warrants to purchase common shares of Trevali are listed on the TSX (symbol TV.WT). For further details on Trevali, readers are referred to the Company's web site (www.trevali.com) and to Canadian regulatory filings on SEDAR at www.sedar.com.

Qualified Person and Quality Control/Quality Assurance

EurGeol Dr. Mark D. Cruise, Trevali's President and CEO and a qualified person as defined by National Instrument 43-101, has supervised the preparation of the scientific and technical information that forms the basis for this news release. Dr. Cruise is not independent of the Company, as he is an officer and shareholder.

The work program at Stratmat was designed and supervised by, Dayle Rusk, P.Geo - VP-Exploration, Trevali, who is responsible for all aspects of the work, including the quality control/quality assurance programs.

On Behalf of the Board of Directors of
TREVALI MINING CORPORATION

"Mark D. Cruise" (signed)
Mark D. Cruise, President

Contact Information: Steve Stakiw, Manager – Corporate Communications
Email: sstakiw@trevali.com
Phone: (604) 488-1661 / Direct: (604) 638-5623

This news release contains "forward-looking statements" within the meaning of the United States private securities litigation reform act of 1995 and "forward-looking information" within the meaning of applicable Canadian securities legislation. Statements containing forward-looking information express, as at the date of this news release, the Company's plans, estimates, forecasts, projections, expectations, or beliefs as to future events or results and the company does not intend, and does not assume any obligation to, update such statements containing the forward-looking information. Such forward-looking statements and information include, but are not limited to statements as to: the accuracy of estimated mineral reserves and resources, anticipated results of future exploration, and forecast future metal prices, anticipated results of future electrical sales and expectations that environmental, permitting, legal, title, taxation, socio-economic, political, marketing or other issues will not materially affect estimates of mineral reserves. These statements reflect the Company's current views with respect to future events and are necessarily based upon a number of assumptions and estimates that, while considered reasonable by the Company, are inherently subject to significant business, economic, competitive, political and social uncertainties and contingencies.

These statements reflect the Company's current views with respect to future events and are necessarily based upon a number of assumptions and estimates that, while considered reasonable by the company, are inherently subject to significant business, economic, competitive, political and social uncertainties and contingencies. Many factors, both known and unknown, could cause actual results, performance or achievements to be materially different from the results, performance or achievements that are or may be expressed or implied by such forward-looking statements contained in this news release and the company has made assumptions and estimates based on or related to many of these factors. Such factors include, without limitation:

fluctuations in spot and forward markets for silver, zinc, base metals and certain other commodities (such as natural gas, fuel oil and electricity); fluctuations in currency markets (such as the Peruvian sol versus the U.S. dollar); risks related to the technological and operational nature of the Company's business; changes in national and local government, legislation, taxation, controls or regulations and political or economic developments in Canada, the United States, Peru or other countries where the Company may carry on business in the future; risks and hazards associated with the business of mineral exploration, development and mining (including environmental hazards, industrial accidents, unusual or unexpected geological or structural formations, pressures, cave-ins and flooding); risks relating to the credit worthiness or financial condition of suppliers, refiners and other parties with whom the Company does business; inadequate insurance, or inability to obtain insurance, to cover these risks and hazards; employee relations; relationships with and claims by local communities and indigenous populations; availability and increasing costs associated with mining inputs and labour; the speculative nature of mineral exploration and development, including the risks of obtaining necessary licenses and permits and the presence of laws and regulations that may impose restrictions on mining; diminishing quantities or grades of mineral reserves as properties are mined; global financial conditions; business opportunities that may be presented to, or pursued by, the Company; the Company's ability to complete and successfully integrate acquisitions and to mitigate other business combination risks; challenges to, or difficulty in maintaining, the Company's title to properties and continued ownership thereof; the actual results of current exploration activities, conclusions of economic evaluations, and changes in project parameters to deal with unanticipated economic or other factors; increased competition in the mining industry for properties, equipment, qualified personnel, and their costs. Investors are cautioned against attributing undue certainty or reliance on forward-looking statements. Although the Company has attempted to identify important factors that could cause actual results to differ materially, there may be other factors that cause results not to be as anticipated, estimated, described or intended. The Company does not intend, and does not assume any obligation, to update these forward-looking statements or information to reflect changes in assumptions or changes in circumstances or any other events affecting such statements or information, other than as required by applicable law.

Trevali's production plans at Halfmile-Stratmat and Santander are based only on Indicated and Inferred Mineral Resources and not Mineral Reserves and do not have demonstrated economic viability. Inferred Mineral Resources are considered too speculative geologically to have the economic considerations applied to them that would enable them to be categorized as Mineral Reserves, and there is therefore no certainty that the conclusions of the production plans and Preliminary Economic Assessment (PEA) will be realized. Additionally where Trevali discusses exploration/expansion potential, any potential quantity and grade is conceptual in nature and there has been insufficient exploration to define a mineral resource and it is uncertain if further exploration will result in the target being delineated as a mineral resource.

The TSX has not approved or disapproved of the contents of this news release.