



# Second Quarter 2025 Financial Results

---

August 2025



# Cautionary Notes

## Cautionary Note Regarding Forward-Looking Information and Statements

Except for statements of historical fact relating to us, certain statements contained in this presentation (including information incorporated by reference herein) constitute forward-looking information, future oriented financial information, or financial outlooks (collectively “forward-looking information”) within the meaning of Section 27A of the Securities Act of 1933, as amended (the “Securities Act”), and Section 21E of the Securities Exchange Act of 1934, as amended (the “Exchange Act”), and are intended to be covered by the safe harbor provided for under these sections. Forward-looking information may be contained in this document and our other public filings. Forward-looking information relates to statements concerning our outlook and anticipated events or results and in some cases, can be identified by terminology such as “may”, “will”, “could”, “should”, “expect”, “plan”, “anticipate”, “believe”, “intend”, “estimate”, “projects”, “predict”, “potential”, “continue” or other similar expressions concerning matters that are not historical facts, as well as statements written in the future tense. When made, forward-looking statements are based on information known to management at such time and/or management’s good faith belief with respect to future events. Such statements are subject to risks and uncertainties that could cause actual performance or results to differ materially from those expressed in the Company’s forward-looking statements. Many of these factors are beyond the Company’s ability to control or predict. Given these uncertainties, readers are cautioned not to place undue reliance on forward-looking statements.

The key risks and uncertainties include, but are not limited to: local and global political and economic conditions; governmental and regulatory requirements and actions by governmental authorities, including changes in government policy, government ownership requirements, changes in environmental, tax and other laws or regulations and the interpretation thereof; developments with respect to global pandemics, including the duration, severity and scope of a pandemic and potential impacts on mining operations; risks and uncertainties resulting from the Incident at Çöpler described in our Annual Report on Form 10-K for the year ended December 31, 2024; and other risk factors detailed from time to time in the Company’s reports filed with the Securities and Exchange Commission on EDGAR at [www.sec.gov](http://www.sec.gov) the Canadian securities regulatory authorities on SEDAR at [www.sedarplus.ca](http://www.sedarplus.ca) and on our website at [www.ssrmining.com](http://www.ssrmining.com).

Forward-looking information and statements in this presentation include any statements concerning, among other things: all information related to the Company’s Çöpler operations, including timelines, outlook, preliminary costs, remediation plans, and possible restart plans; forecasts and outlook; preliminary cost reporting in this document; timing, production, operating, cost, and capital expenditure guidance; our operational and development targets and catalysts and the impact of any suspensions on operations; the results of any gold reconciliations; the ability to discover additional ore; the generation of free cash flow and payment of dividends; matters relating to proposed exploration; communications with local stakeholders; maintaining community and government relations; negotiations of joint ventures; negotiation and completion of transactions; commodity prices; Mineral Resources, Mineral Reserves, conversion of Mineral Resources, realization of Mineral Reserves, and the existence or realization of Mineral Resource estimates; the development approach; the timing and amount of future production; the timing of studies, announcements, and analysis; the timing of construction and development of proposed mines and process facilities; capital and operating expenditures; economic conditions; availability of sufficient financing; exploration plans; receipt of regulatory approvals; timing and impact surrounding suspension or interruption of operations as a result of regulatory requirements or actions by governmental authority; any and all forecasts and outlooks relating to the CC&V transaction, timing and realized value and benefits of the development of the CC&V property, including timing of exploration, construction and production, and available liquidity resulting from the CC&V transaction; other timing, exploration, development, operational, financial, budgetary, economic, legal, social, environmental, regulatory, and political matters that may influence or be influenced by future events or conditions.

Such forward-looking information and statements are based on a number of material factors and assumptions, including, but not limited in any manner to, those disclosed in any other of our filings on EDGAR and SEDAR, and include: any assumptions made in respect of the Company’s Çöpler operations; the inherent speculative nature of exploration results; the ability to explore; communications with local stakeholders; maintaining community and governmental relations; status of negotiations of joint ventures; weather conditions at our operations; commodity prices; the ultimate determination of and realization of Mineral Reserves; existence or realization of Mineral Resources; the development approach; availability and receipt of required approvals, titles, licenses and permits; sufficient working capital to develop and operate the mines and implement development plans; access to adequate services and supplies; foreign currency exchange rates; interest rates; access to capital markets and associated cost of funds; availability of a qualified work force; ability to negotiate, finalize, and execute relevant agreements; lack of social opposition to our mines or facilities; lack of legal challenges with respect to our properties; the timing and amount of future production; the ability to meet production, cost, and capital expenditure targets; timing and ability to produce studies and analyses; capital and operating expenditures; economic conditions; availability of sufficient financing; the ultimate ability to mine, process, and sell mineral products on economically favorable terms; and any and all other timing, exploration, development, operational, financial, budgetary, economic, legal, social, geopolitical, regulatory and political factors that may influence future events or conditions. While we consider these factors and assumptions to be reasonable based on information currently available to us, they may prove to be incorrect.

Such factors are not exhaustive of the factors that may affect any of the Company’s forward-looking statements and information, and such statements and information will not be updated to reflect events or circumstances arising after the date of such statements or to reflect the occurrence of anticipated or unanticipated events. Forward-looking information and statements are only predictions based on our current estimates and assumptions. Actual results may vary materially from such forward-looking information. Other than as required by law, the Company does not intend, and undertake no obligation to update any forward-looking information to reflect, among other things, new information or future events. The information contained on, or that may be accessed through, our website is not incorporated by reference into, and is not a part of this document. All references to “\$” in this presentation are to U.S. dollars unless otherwise stated.

## Cautionary Note Regarding Non-GAAP Financial Measures

This presentation includes certain non-GAAP financial measures to assist in understanding the Company’s financial results. The non-GAAP financial measures are employed by us to measure our operating and economic performance and to assist in decision-making, as well as to provide key performance information to senior management. We believe that, in addition to conventional measures prepared in accordance with GAAP, certain investors and other stakeholders will find this information useful to evaluate our operating and financial performance; however, these non-GAAP performance measures – including total cash, total debt, net cash (debt), cash costs, all-in sustaining costs (“AISC”) per ounce sold, adjusted net income (loss) attributable to shareholders, cash generated by (used in) operating activities before changes in working capital, free cash flow, and free cash flow before changes in working capital– do not have any standardized meaning. These performance measures are intended to provide additional information and should not be considered in isolation or as a substitute for measures of performance prepared in accordance with GAAP. Our definition of our non-GAAP financial measures may not be comparable to similarly titled measures reported by other companies. These non-GAAP measures should be read in conjunction with our consolidated financial statements. Readers should also refer to the endnotes in this presentation for further information regarding how the Company calculates certain of these measures.

# Diversified Portfolio with Six Key Assets

*Focused on Delivering Free Cash Flow and Growth*

## Six Key Assets

*across four core  
high-quality jurisdictions*

## 3rd Largest U.S. Gold Producer

*long-lived Marigold and  
CC&V mines provide  
robust U.S. platform*

## Strong Balance Sheet

*total liquidity of +\$910M  
to support growth and  
capital commitments <sup>(1)</sup>*

## Diversified Portfolio

*focus on free cash flow  
and margins*

## Large Mineral Reserve Base

*8Moz AuEq  
Mineral Reserves  
(excludes contributions from  
Hod Maden and CC&V)*

## Organic Growth & Prudent M&A

*Greenfield and Brownfield  
targets to drive production  
growth complemented by  
value accretive M&A*



## 2025 Priorities

- CC&V Close & Integration
- 2025 Operating Guidance
- Puna Mine Life Extension
- Advance Çöpler Towards Restart
- Advance Hod Maden
- CC&V Technical Report
- Advance Buffalo Valley at Marigold
- Portfolio-Wide Exploration

Operations

Projects

Key Exploration

NSR Royalty

<sup>(1)</sup> Free cash flow and total liquidity are non-GAAP metrics;  
please see end notes and cautionary notes for a discussion on non-GAAP metrics

# 2025 Second Quarter Results

## Quarterly Operating Summary

- Consolidated production was 120.2 k GEOs at cost of sales of \$1,396/oz and AISC of \$2,068/oz (\$1,858 ex. Çöpler)<sup>(1)</sup>
  - At Marigold, production was 35.9 koz gold at cost of sales of \$1,584/oz and AISC of \$1,977/oz
  - At CC&V attributable production was 44.1 koz gold at cost of sales of \$1,116/oz and AISC of \$1,339/oz
  - At Seabee, production was 11.0 koz gold at cost of sales of \$1,785/oz and AISC of \$2,708/oz; operations during the quarter were suspended due to power interruptions caused by forest fires to the north of the mine
  - At Puna, production was 2.8 Moz silver at cost of sales of \$15.03/oz and AISC of \$12.57/oz
  - At Çöpler, second quarter remediation spend totaled \$6.1 million and care & maintenance costs totaled \$36.7 million

## Liquidity and Balance Sheet as of June 30, 2025

- Cash and cash equivalent balance of \$412.1 million and a net cash position of \$182.1 million<sup>(1)</sup>
- Total liquidity of \$912.1 million includes undrawn \$400 million revolving credit facility and \$100 million accordion feature
- Operating cash flow of \$157.8 million and free cash flow of \$98.4 million in the quarter<sup>(1)</sup>
  - Before working capital adjustments, Q2/25 operating cash flow was \$196.0 million and free cash flow was \$136.6 million
  - H1 2025 operating cash flow was \$242.7 million and free cash flow was \$137.7 million, or \$196.0 million before working capital adjustments

## Exploration & Development Activities

- Approximately \$16.2 million spent at Hod Maden during the second quarter of 2025 as engineering and initial site establishment efforts continued to progress, bringing year-to-date spend to \$29.1 million at the project
- Outlined initial mine life extension expectations at Puna, with expected 2026 silver production of 7 to 8 million ounces

<sup>(1)</sup> AISC, net cash, Free Cash Flow, and Free Cash Flow Before Changes in Working Capital are non-GAAP metrics; please see end notes and cautionary notes for a discussion on non-GAAP metrics; cost of sales and AISC are reported per ounce of payable metal sold; GEO denotes gold equivalent ounces

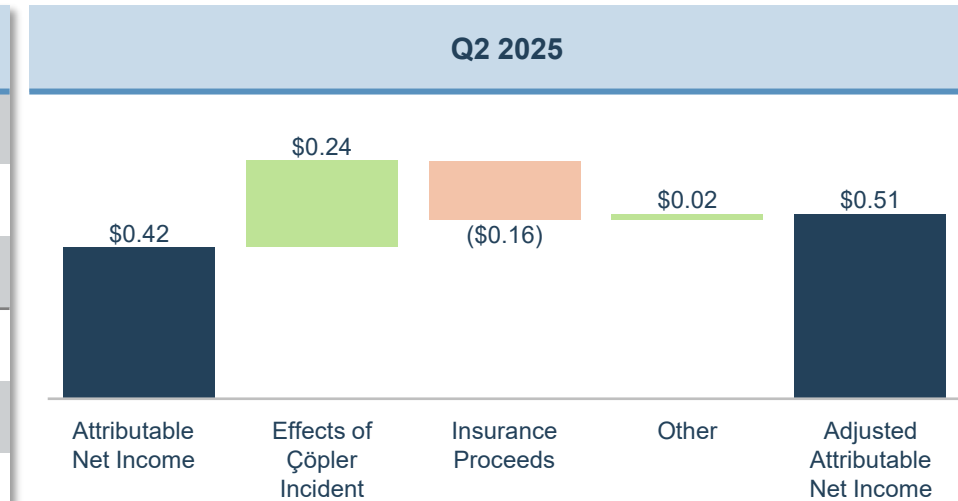


# 2025 Second Quarter Financial Results

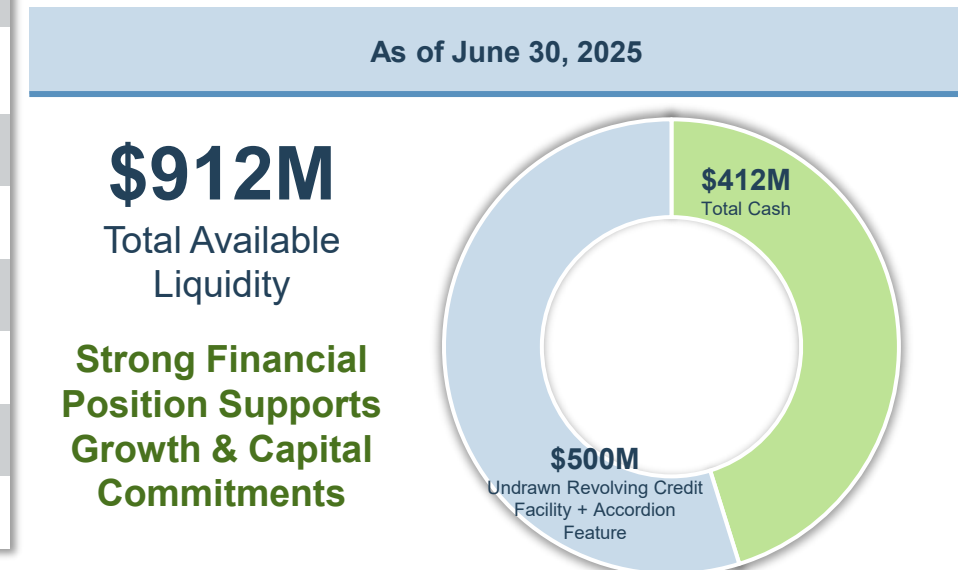
## Financial & Operating Performance <sup>(1)</sup>

		Q2 2025	Q2 2024
Gold Equivalent Production	oz	120,191	76,102
Gold Sales	oz	90,739	40,470
Silver Sales	Moz	2.5	2.5
<b>Total Gold Equivalent Sales</b>	<b>oz</b>	<b>116,736</b>	<b>71,190</b>
Revenue	\$M	\$405.5	\$184.8
Net Income (loss)	\$M	\$80.4	\$2.5
<b>Net Income (loss) Attributable to SSRM Shareholders</b>	<b>\$M</b>	<b>\$90.1</b>	<b>\$9.7</b>
Net Income (loss) Per Share Attributable (Basic / Diluted)	\$/sh	\$0.44 / \$0.42	\$0.05 / \$0.05
<b>Adjusted Net Income Attributable to SSRM Shareholders</b>	<b>\$M</b>	<b>\$110.1</b>	<b>\$7.5</b>
Adjusted Net Income Per Share (Basic / Diluted) Attributable	\$/sh	\$0.54 / \$0.51	\$0.04 / \$0.04
Cash Provided by Operating Activities Before Changes in Working Capital	\$M	\$196.0	(\$23.1)
Cash Provided by Operating Activities	\$M	\$157.8	(\$78.1)
Free Cash Flow Before Change in Working Capital	\$M	\$136.6	(\$61.3)
Free Cash Flow	\$M	\$98.4	(\$116.3)

## Diluted EPS Bridge



## Balance Sheet & Liquidity <sup>(1)</sup>

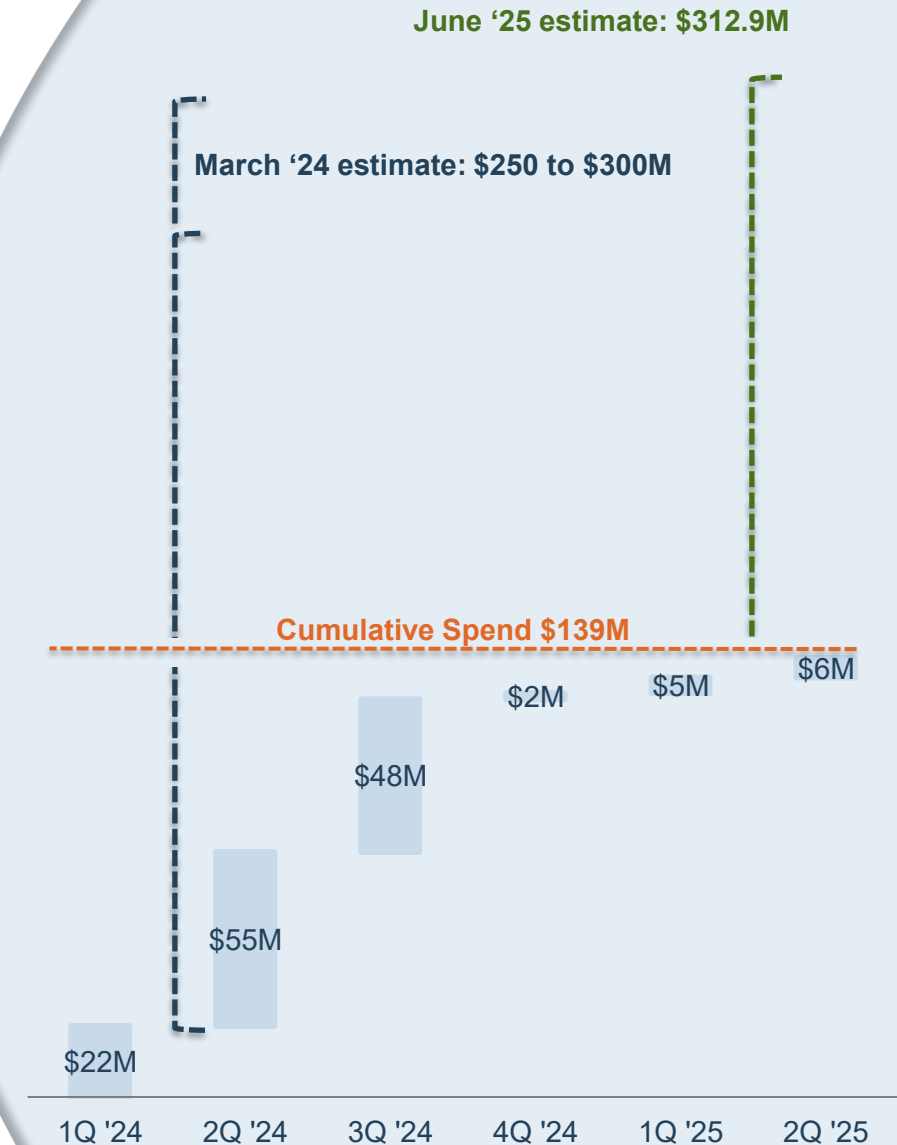


<sup>(1)</sup> Adjusted Net Income Attributable to SSRM Shareholders, Adjusted Net Income Per Share Attributable to SSRM Shareholders, Cash Provided by Operating Activities Before Changes in Working Capital, Free Cash Flow, Free Cash Flow Before Changes in Working Capital, Total Cash, and Total Liquidity are non-GAAP metrics; please see endnotes and cautionary notes for a discussion on non-GAAP metrics

# Çöpler Incident

## Updated Reclamation & Remediation Costs

- Following the incident, SSR Mining estimated future reclamation and remediation costs of \$250 to \$300 million. The Company accrued the lower end of this cost range
- During Q2 2025, the Company recorded an increase to the reclamation and remediation costs associated with the Çöpler incident
- The revised estimate reflects an increase of \$12.9 million above the previously disclosed estimated reclamation and remediation cost range of \$250 to \$300 million provided in Q1 2024
- The revision in estimate reflects the Company's advancement of the engineering and construction design of the East Storage Facility and the advancement of the studies for the permanent closure of the heap leach pad
- Since the Çöpler Incident, the Company has spent nearly \$140 million on reclamation and remediation





# Operations



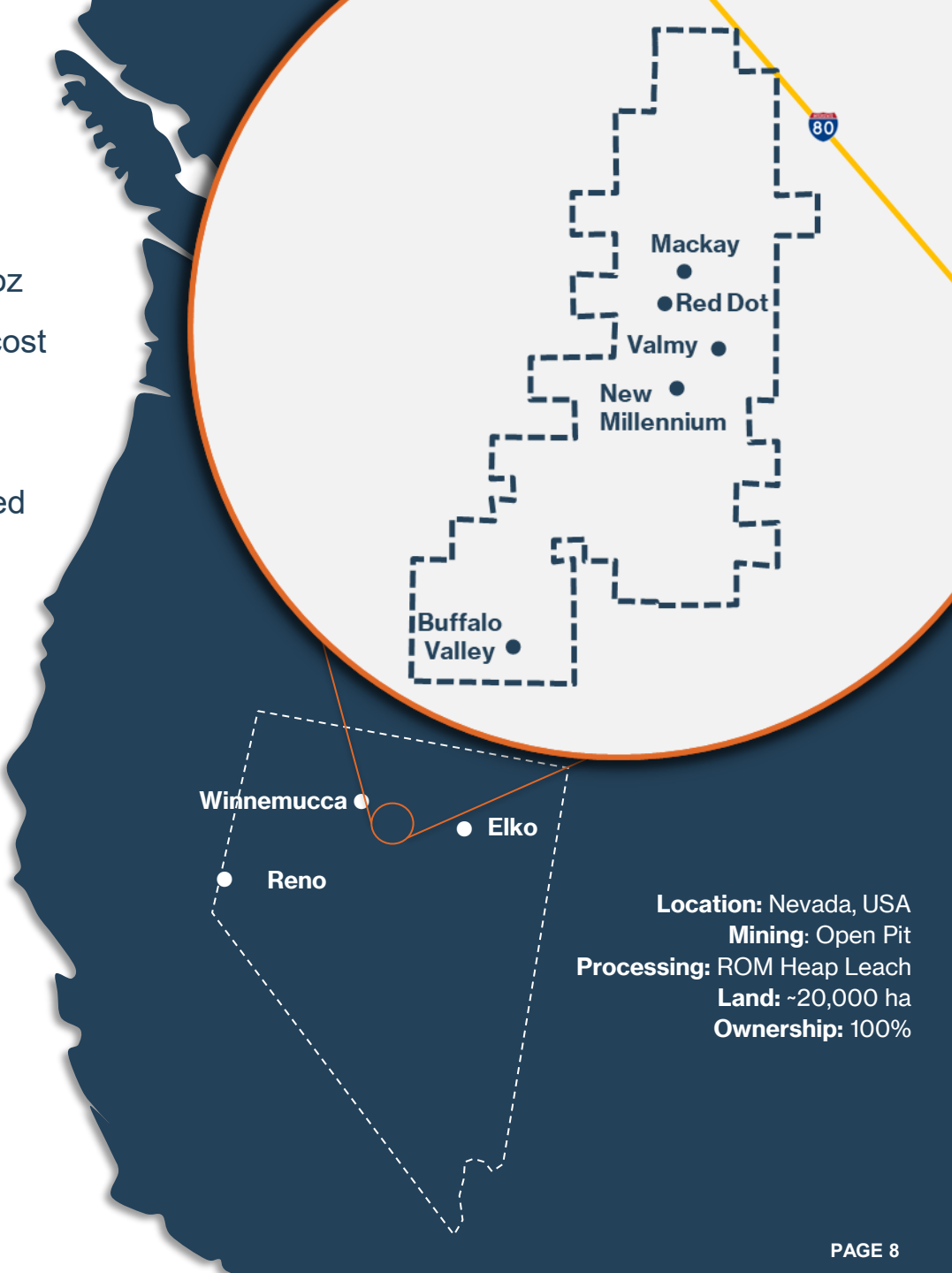
# Marigold: Large-Scale Open Pit in Nevada

## Quarterly Commentary <sup>(1)</sup>

- Q2 2025 production of 35.9 koz gold at cost of sales of \$1,584/oz and AISC of \$1,977/oz
- Full-year 2025 production guidance for Marigold is 160 to 190 koz of gold at mine site cost of sales of \$1,530 to \$1,570/oz and AISC of \$1,800 to \$1,840/oz
- H2 2025 production is expected to be approximately 55-60% weighted to Q4
- Continued to advance exploration and engineering studies at Buffalo Valley; commenced engineering studies at New Millennium

Operating Results		Q2 2024	Q3 2024	Q4 2024	Q1 2025	Q2 2025
Ore Mined	kt	7,474	7,151	7,343	5,356	3,425
Waste Mined	kt	18,778	15,392	17,271	20,455	20,912
Total Material Mined	kt	26,252	22,543	24,615	25,811	24,337
Strip Ratio	w/o	2.5	2.2	2.4	3.8	6.1
Ore Stacked	kt	7,474	7,151	7,343	5,356	3,426
Gold Grade Stacked	g/t	0.20	0.36	0.42	0.33	0.62
Gold Production	oz	25,691	48,189	59,702	38,586	35,906
Total Capital Spend	\$M	\$13.1	\$11.1	\$12.5	\$15.3	\$18.8
Cost of Sales	\$/oz	\$1,542	\$1,573	\$1,406	\$1,453	\$1,584
AISC <sup>(1)</sup>	\$/oz	\$2,065	\$1,828	\$1,638	\$1,765	\$1,977

<sup>(1)</sup> AISC are a non-GAAP metric; please see endnotes and cautionary notes for a discussion on non-GAAP metrics and additional details;  
Cost of sales and AISC are reported per ounce of payable metal sold





# CC&V: Long-Lived Asset With Further Upside

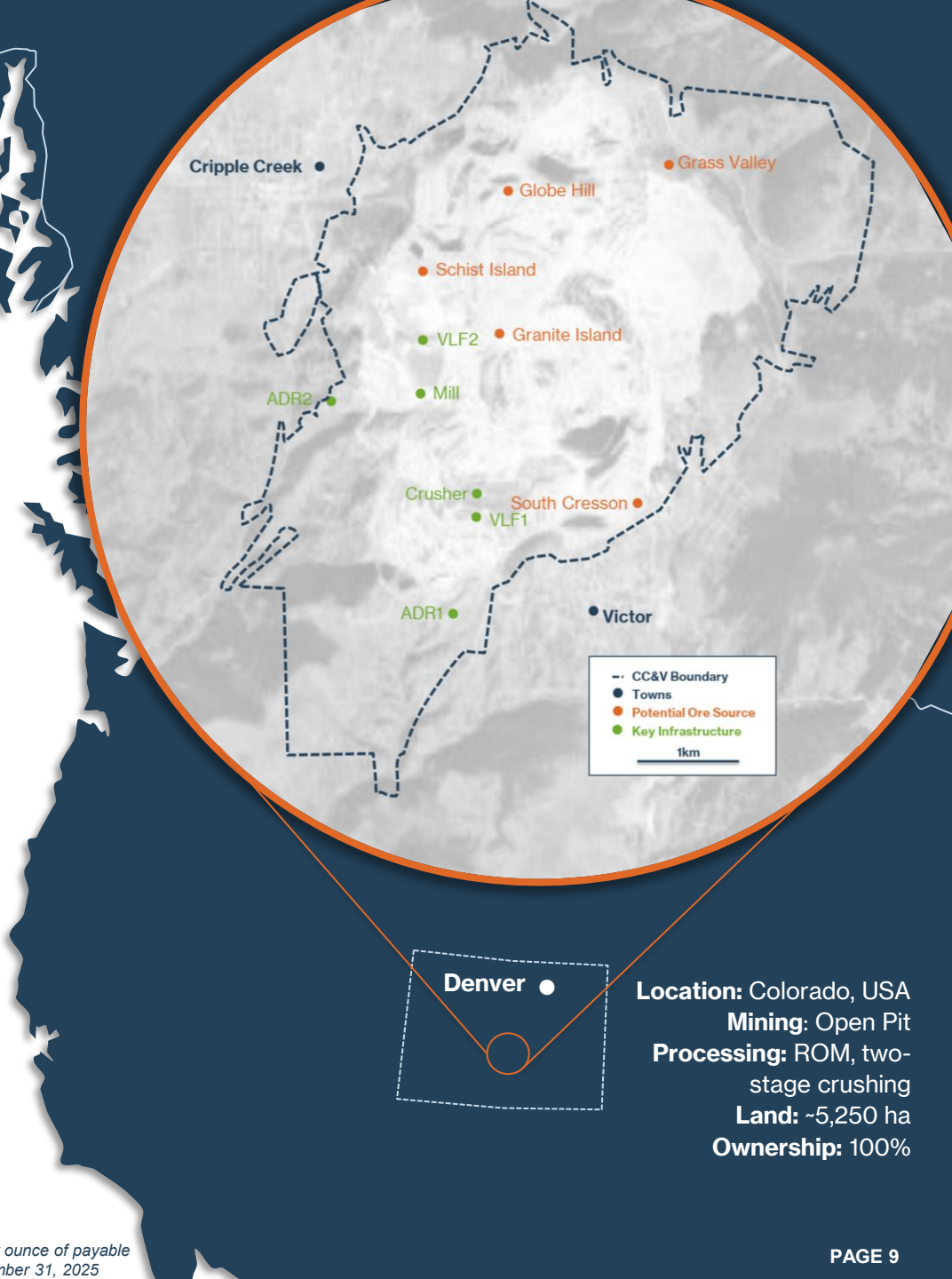
## Quarterly Commentary <sup>(1)</sup>

- Q2 2025 production of 44.1 koz gold at cost of sales of \$1,116/oz and AISC of \$1,339/oz
- For the period of February 28, 2025 to December 31, 2025, production guidance for CC&V is 90 to 110 koz of gold at mine site cost of sales of \$1,470 to \$1,510/oz and AISC of \$1,800 to \$1,840/oz
- A technical report for CC&V based on existing Mineral Reserves remains on track for publication in 2025; Continuing to evaluate and advance opportunities for future optimization and resource conversion

Operating Results		Q1 2025 <sup>(2)</sup>	Q2 2025
Ore Mined	kt	1,824	3,441
Waste Mined	kt	1,571	4,880
Total Material Mined	kt	3,395	8,321
Strip Ratio	w:o	0.9	1.4
Ore Stacked	kt	1,859	3,519
Gold Grade Stacked	g/t	0.36	0.50
Gold Production	oz	11,282	44,062
Total Capital Spend	\$M	\$1.4	\$14.4
Cost of Sales	\$/oz	\$1,590	\$1,116
AISC <sup>(1)</sup>	\$/oz	\$1,774	\$1,339

## Acquisition Highlights

- CC&V meaningfully increases SSR Mining’s scale and positions the Company as the third largest gold producer in the U.S.A.
- Consideration consists of a \$100 million upfront cash payment and \$175 million in milestone payments
- Since the acquisition, CC&V has generated nearly \$85 million in mine site free cash flow



**Location:** Colorado, USA  
**Mining:** Open Pit  
**Processing:** ROM, two-stage crushing  
**Land:** ~5,250 ha  
**Ownership:** 100%

<sup>(1)</sup> AISC are a non-GAAP metric; please see endnotes and cautionary notes for a discussion on non-GAAP metrics and additional details; Cost of sales and AISC are reported per ounce of payable metal sold <sup>(2)</sup> Q1 2025 operating results represents the period from February 28, 2025 to March 31, 2025; 2025 Guidance represents the period of February 28, 2025 to December 31, 2025

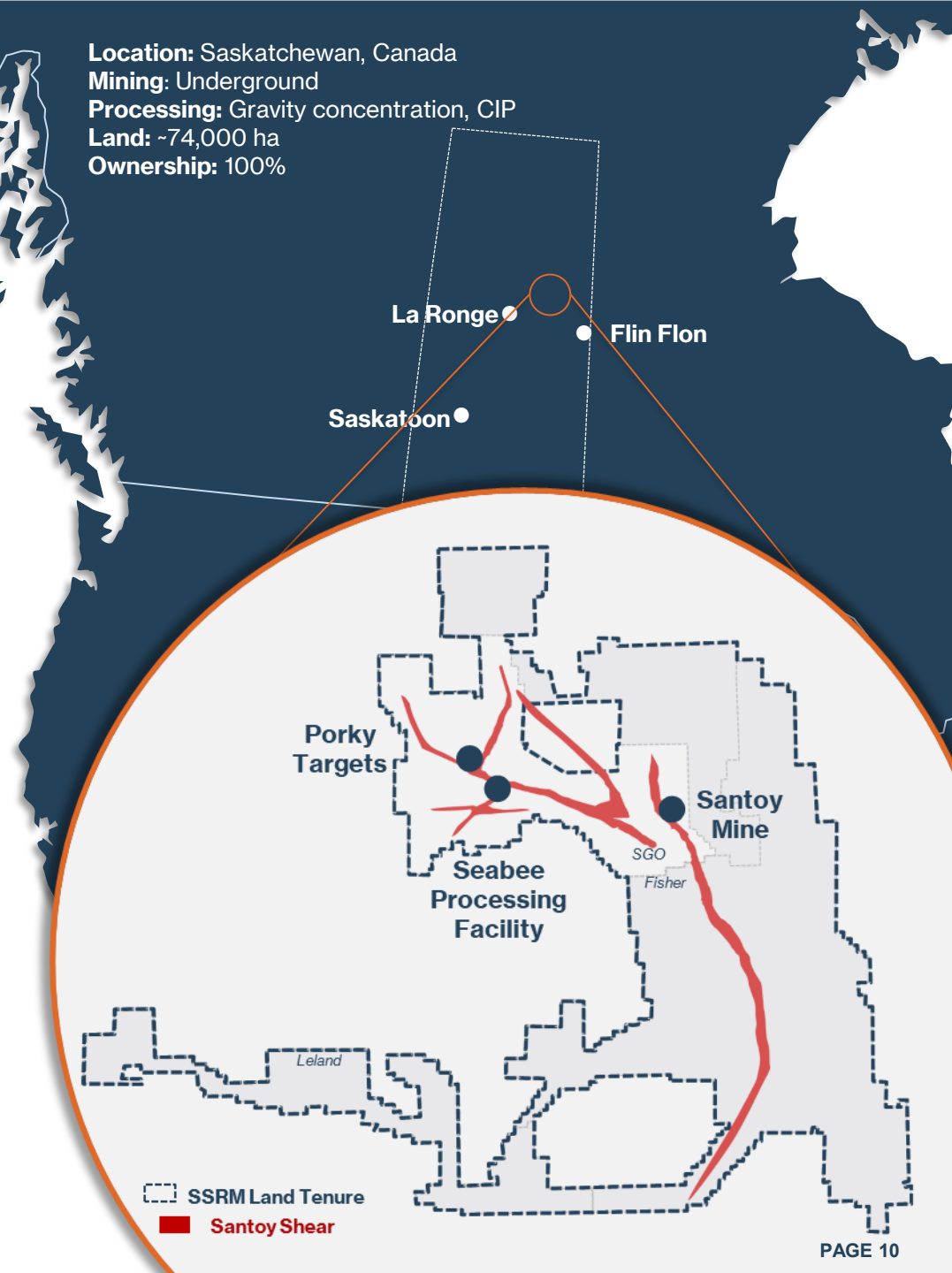
# Seabee: High-Grade Underground in Canada

## Quarterly Commentary <sup>(1)</sup>

- Production of 11.0 koz gold at cost of sales of \$1,785/oz and AISC of \$2,708/oz
- Operations during the quarter were impacted by temporary power interruptions caused by forest fires to the north of the mine
- As a result, full-year 2025 production at Seabee is targeted at the low end of the mine’s previously issued production guidance of 70,000 to 80,000 ounces of gold
- During the quarter, a donation was made to the Canadian Red Cross to support the emergency recovery and relief efforts caused by forest fires in northern Saskatchewan

Operating Results		Q2 2024	Q3 2024	Q4 2024	Q1 2025	Q2 2025
Ore Mined	kt	115	56	90	82	66
Ore Milled	kt	103	56	92	90	68
Gold Mill Feed Grade	g/t	5.40	6.10	9.66	9.00	5.22
Gold Recovery	%	95%	96%	97%	97%	97%
Gold Production	oz	16,709	10,252	27,811	26,001	10,998
Total Capital Spend	\$M	\$7.1	\$3.3	\$7.6	\$11.8	\$8.8
Cost of Sales	\$/oz	\$1,150	\$1,280	\$816	\$890	\$1,785
AISC <sup>(1)</sup>	\$/oz	\$1,626	\$2,301	\$1,214	\$1,374	\$2,708

<sup>(1)</sup> AISC are a non-GAAP metric; please see endnotes and cautionary notes for a discussion on non-GAAP metrics and additional details;  
Cost of sales and AISC are reported per ounce of payable metal sold

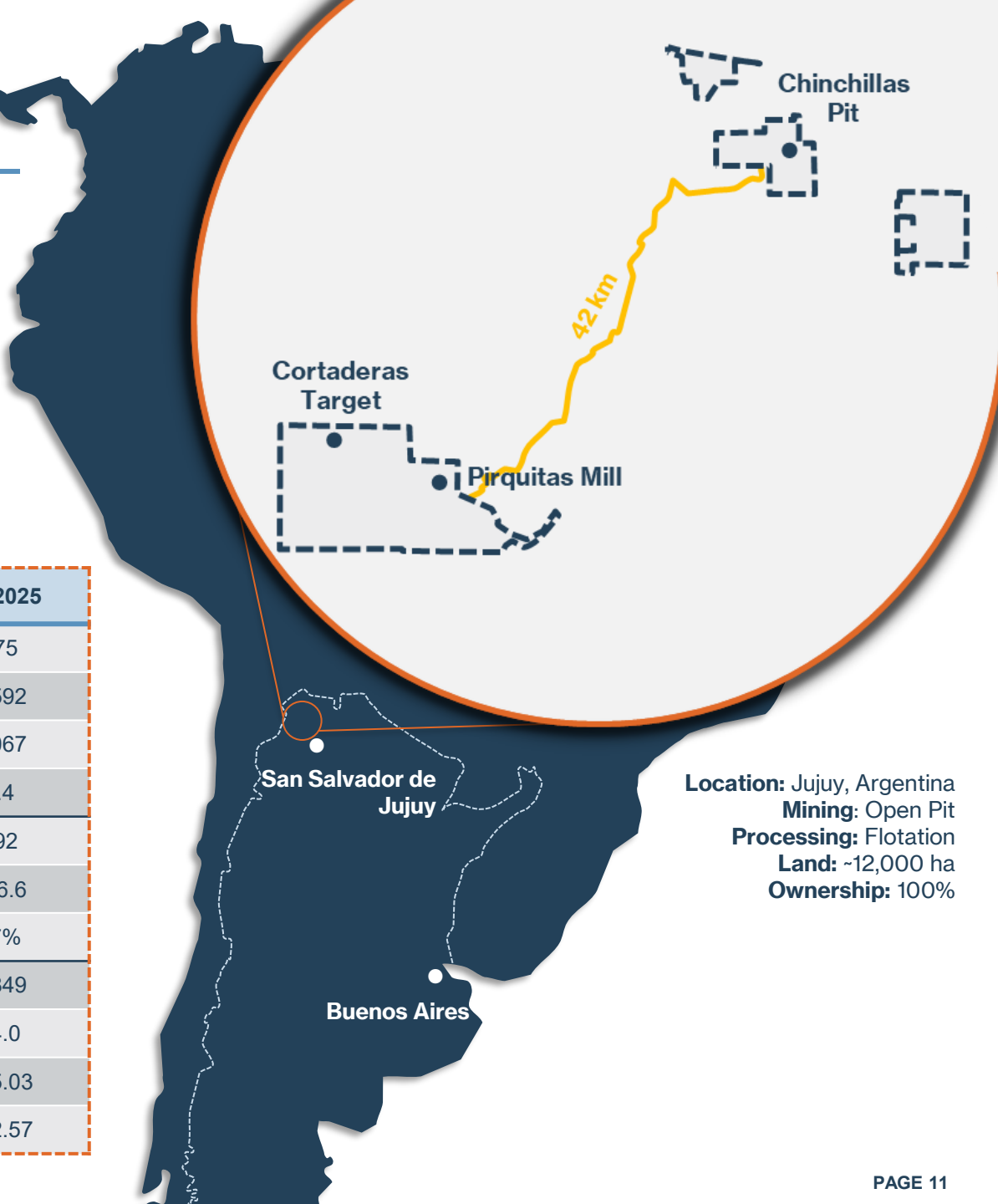


# Puna: Large Open-Pit Silver Producer

## Quarterly Commentary <sup>(1)</sup>

- Production of 2.8 Moz silver at cost of sales of \$15.03/oz and AISC of \$12.57/oz
- Full-year 2025 production guidance at Puna is 8.00 to 8.75 Moz of silver at cost of sales of \$12.50 to \$14.00/oz and AISC of \$14.25 to \$15.75/oz
- Continued advancement of extension opportunities at Chinchillas outlined initial plans for nearly three years of additional silver production at Puna
- Exploration and engineering continuing to build on this extended mine life, complemented by the ongoing evaluation of Cortaderas as a longer-term growth pathway for Puna

Operating Results		Q2 2024	Q3 2024	Q4 2024	Q1 2025	Q2 2025
Ore Mined	kt	668	648	750	627	475
Waste Mined	kt	1,519	1,535	1,337	1,089	1,592
Total Material Mined	kt	2,187	2,183	2,087	1,716	2,067
Strip Ratio	w:o	2.3	2.4	1.8	1.7	3.4
Ore Milled	kt	470	486	489	454	492
Silver Mill Feed Grade	g/t	186.3	190.5	194.0	177.8	186.6
Silver Recovery	%	97%	97%	97%	97%	97%
Silver Production	koz	2,731	2,885	2,970	2,505	2,849
Total Capital Spend	\$M	\$3.6	\$4.9	\$5.0	\$2.0	\$4.0
Cost of Sales	\$/oz	\$16.10	\$16.06	\$15.84	\$15.51	\$15.03
AISC <sup>(1)</sup>	\$/oz	\$15.19	\$15.37	\$16.06	\$13.16	\$12.57



<sup>(1)</sup> AISC are a non-GAAP metric; please see endnotes and cautionary notes for a discussion on non-GAAP metrics and additional details;  
Cost of sales and AISC are reported per ounce of payable metal sold

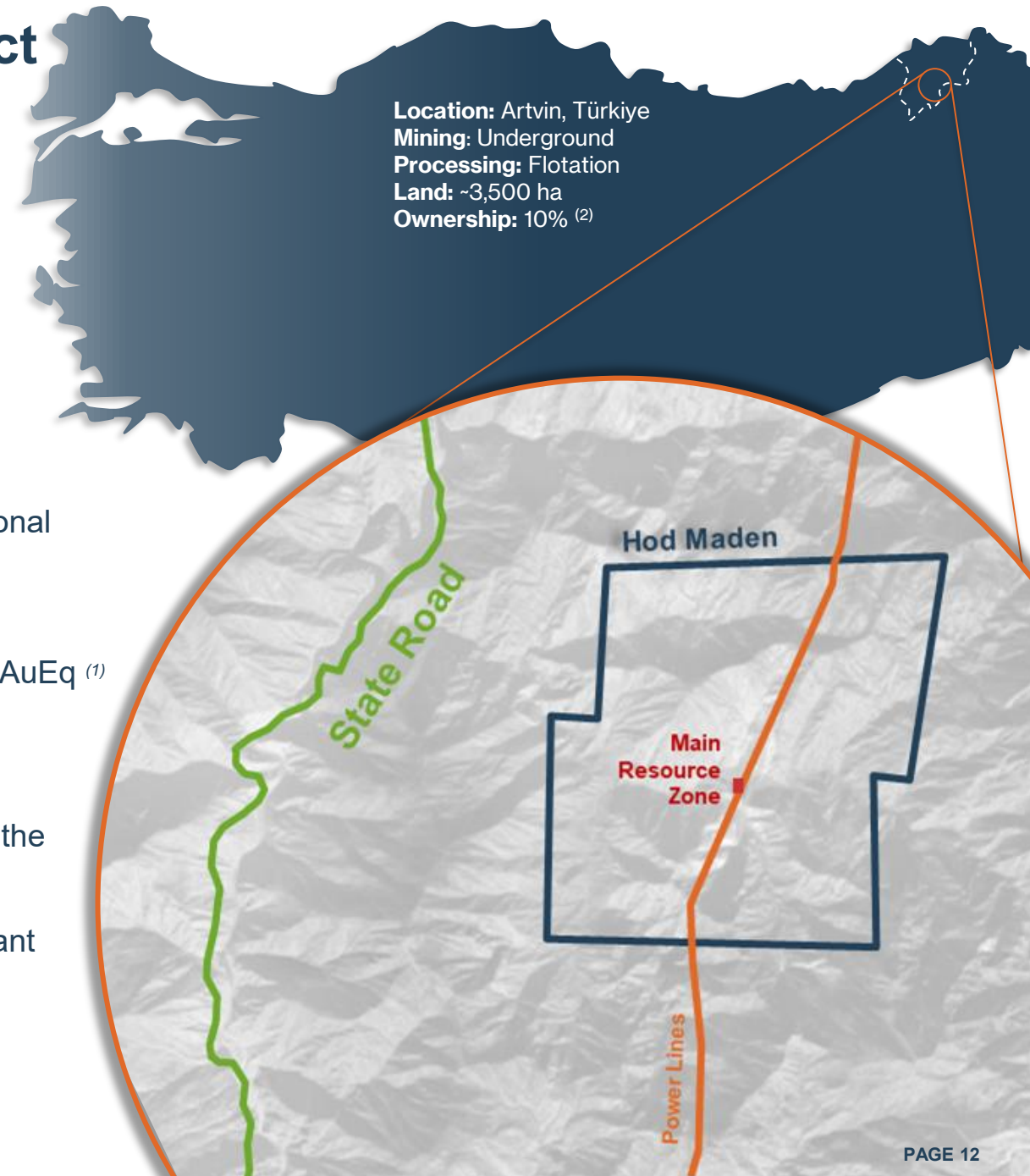
# Hod Maden: World-Class Copper-Gold Project

## Quarterly Commentary

- In Q2 2025, \$16.2 million was spent at Hod Maden as engineering and initial site establishment efforts continued to progress, bringing H1 2025 spend to \$29.1 million
- Full-year 2025 attributable growth capital expenditures are expected to total between \$60 and \$100 million

## Project Overview

- In 2023, SSR Mining acquired an up to 40% ownership and immediate operational control in Hod Maden project through an earn-in structured transaction for total consideration of \$270 million
- Life of mine production of 2.5Moz AuEq; Average annual production of 195koz AuEq <sup>(1)</sup>
- Mineral Reserve grade of 8.8g/t Au and 1.5% Cu (11.1g/t AuEq) <sup>(1)</sup>
- Hod Maden is located in northeastern Türkiye within the Eastern Pontides metallogenic belt; Project is road accessible, within 200km of multiple ports on the Black Sea & connected to National power grid
- Long hole stoping underground mining and 800ktpa (~2,220tpd) processing plant producing gold-rich copper concentrate + pyrite concentrate
- EIA received in 2021, majority of key permits already in place



<sup>(1)</sup> All project metrics sourced from the 2021 Feasibility Study and are shown on a 100% basis over 13 year mine life

<sup>(2)</sup> For additional details on the Hod Maden transaction, please see endnotes and refer to the Company's news released on May 8, 2023, filed as a form 8-K on EDGAR at [www.sec.gov](http://www.sec.gov) or on the Company's website at [www.ssrmining.com](http://www.ssrmining.com).





# **Appendix & Endnotes**

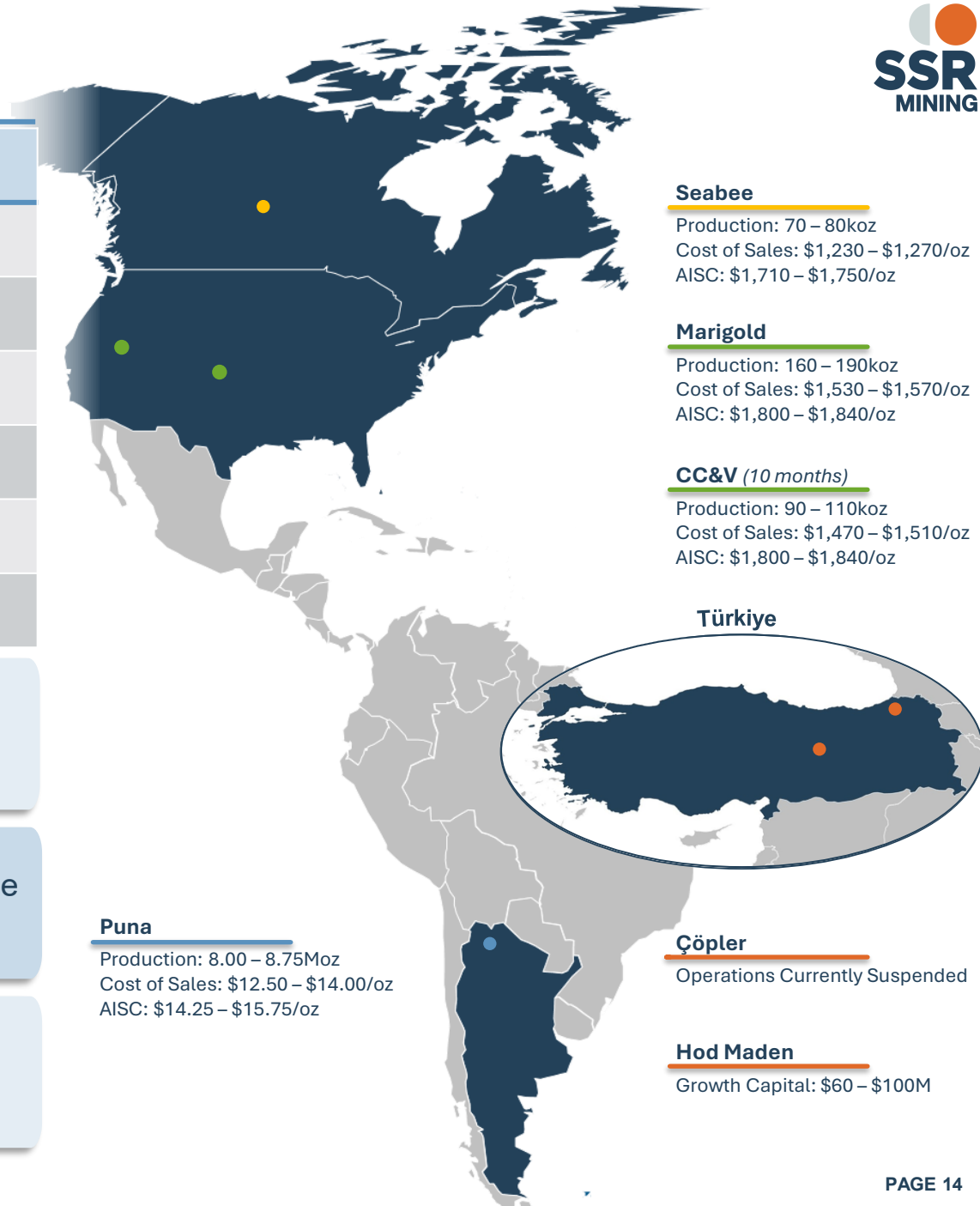
# 2025 Guidance

Operating Guidance		Total (Excluding Çöpler)	Consolidated
Gold Production	koz	320 – 380	320 – 380
Silver Production	Moz	8.00 – 8.75	8.00 – 8.75
<b>Gold Equivalent Production</b>	<b>koz</b>	<b>410 – 480</b>	<b>410 – 480</b>
Cost of Sales	\$/oz	1,375 – 1,435	1,375 – 1,435
Cash Costs <sup>(1)</sup>	\$/oz	1,350 – 1,410	1,350 – 1,410
AISC <sup>(1)</sup>	\$/oz	1,890 – 1,950	2,090 – 2,150

FY2025 guidance represents 10% year-over-year in gold equivalent ounce production growth

Growth capital at Hod Maden expected to total \$60 to \$100 million, focused on the continued advancement of initial earth works and site access activities

Production and cost metrics for CC&V reflect the period of March 1, 2025 to December 31, 2025



<sup>(1)</sup> AISC and Cash Costs are a non-GAAP metrics; please see endnotes and cautionary notes for a discussion on non-GAAP metrics and additional details;  
Cost of sales and AISC are reported per ounce of payable metal sold



# Endnotes & Non-GAAP Reconciliation

- 1) Detailed disclosure related to the February 13, 2024 incident at the Çöpler mine (the “Çöpler Incident” or the “Incident”) was included in the Annual Report on Form 10-K for the year ended December 31, 2024 filed on February 18, 2025. As of April 1, 2024 the Çöpler remediation and containment work was estimated to cost between \$250.0 to \$300.0 million and take a total of 24 to 36 months to complete. During the second quarter of 2025, the Company recorded an adjustment of reclamation and remediation costs associated with the Çöpler incident of \$62.9 million, comprised of \$9.4 million related to reclamation costs and \$53.5 million related to remediation costs. The revised estimate is now \$312.9 million, an increase of \$12.9 million above the previously disclosed estimated reclamation and remediation cost range. Please refer to our Quarterly Report on Form 10-Q for the period ended June 30, 2025 filed on August 5, 2025 for additional information regarding this adjustment. At this time, we are not able to estimate or predict when and under what conditions we will resume operations at Çöpler. Additionally, SSR Mining cannot, at this time, assess the entire scope of the impact of operating under the 2014 EIA. Further updates on the Çöpler Incident, as and when available will continue to be provided through press releases and updates to the Company’s website. Please refer to our website at [www.ssrmining.com](http://www.ssrmining.com), or our filings on SEDAR at [www.sedarplus.ca](http://www.sedarplus.ca), and on EDGAR at [www.sec.gov](http://www.sec.gov).
- 2) The Company reports Non-GAAP financial measures including adjusted net income (loss) attributable to SSR Mining shareholders, adjusted net income (loss) per share attributable to SSR Mining shareholders, total debt, total cash, net debt (cash), total liquidity, cash provided by (used in) operating activities before changes in working capital, free cash flow (FCF), free cash flow before changes in working capital, cash costs and AISC per ounce sold to manage and evaluate its operating performance at its mines. These Non-GAAP Measures have no standardized definition under U.S GAAP. For explanations of these measures and reconciliations to the most comparable financial measure calculated under U.S. GAAP, please see “Cautionary Note Regarding Non-GAAP Financial Measures” and “Non-GAAP Reconciliations” in this presentation for additional details. See also the Company’s 10-K and 10-Q filings, available on our website at [www.ssrmining.com](http://www.ssrmining.com), on EDGAR at [www.sec.gov](http://www.sec.gov), and on SEDAR at [www.sedarplus.ca](http://www.sedarplus.ca), for detailed definitions of these Non-GAAP measures.
- 4) The Mineral Reserves and Mineral Resources (“MRMR”) information should be read in conjunction with Item 2. Properties in the Company’s Annual Report on Form 10-K for the year ended December 31, 2024 filed on February 18, 2025 and the Technical Report Summaries for each of our material properties included as exhibits to our Annual Report on Form 10-K. As per Subpart 1300 of Regulation S-K, the Company’s year-end 2024 MRMR are presented on an attributable basis, reflecting the Company’s ownership interest in each material property. As of December 31, 2024, SSR Mining owns 80% of the Çöpler district. SSR Mining has not reflected the CC&V or the Hod Maden Mineral Reserves and Mineral Resources into its consolidated MRMR. As of December 31, 2024, SSR Mining’s ownership in Hod Maden is 10%. MRMR shown in the presentation is based on 40% attributable to SSR Mining to reflect interest available to SSR Mining upon completion of earn-in structured cash milestone payments. All gold equivalent ounces (GEO or AuEq) figures are based on the commodity prices listed in the Annual Report. Metal equivalence is calculated for the respective and applicable metals as follows: GEO = Au oz + ((Ag oz \* Ag price) + (Pb lb \* Pb price per pound) + (Zn lb \* Zn price per pound) + (Cu lb \* Cu price per pound)) / (Au price per ounce).
- 5) All Hod Maden project metrics referenced are extracted from, or based on, the Feasibility Study - Technical Report NI 43-101 (“2021 Feasibility Study”) filed July 10, 2022 and effective February 28, 2021 in compliance with the requirements of Canadian National Instrument 43-101 Standards of Disclosure for Mineral Projects (“NI 43-101”). The 2021 Feasibility Study is available as part of the public filings of Horizon Copper Corp. available on SEDAR at [www.sedar.com](http://www.sedar.com). Readers should also refer to the Company’s investor presentation and news release related to this transaction on May 8, 2023, filed as a Current Report on Form 8-K with the SEC and available under the Company’s corporate profile on EDGAR at [www.sec.gov](http://www.sec.gov) or on the Company’s website at [www.ssrmining.com](http://www.ssrmining.com).
- 6) The 2019 convertible notes mature on April 1, 2039 and bear interest at 2.50% payable semi-annually and are convertible by holders into the Company’s common shares, based on an initial conversion rate of 56.7931 common shares per \$1,000 principal amount. Prior to April 1, 2026, the Company may redeem all or part of the notes for cash, but only if the last reported sale price of the Company’s common shares exceeds 130% of the conversion price. On or after April 1, 2026, the Company may redeem the 2019 Notes, in whole or in part, for cash equal to 100% of the 2019 Notes to be redeemed, plus accrued and unpaid interest, if any, to, but excluding, the redemption date. Holders may require the Company to purchase all or a portion of their 2019 Notes on each of April 1, 2026, April 1, 2029, and April 1, 2034 for cash at a purchase price equal to 100% of the principal amount of the 2019 Notes to be purchased, plus accrued and unpaid interest, if any, to, but excluding, the purchase date.
- 7) Financial and operational figures presented in this presentation may not add due to rounding.

## Free Cash Flow

<i>(in thousands)</i>	Three Months Ended June 30		Six Months Ended June 30	
	2025	2024	2025	2024
Cash provided by operating activities (GAAP)	\$157,841	(\$78,132)	\$242,646	(\$53,501)
Expenditures on mineral properties, plant, and equipment	(\$59,455)	(\$38,176)	(\$104,962)	(\$72,211)
Free cash flow (non-GAAP)	\$98,386	(\$116,308)	\$137,684	(\$125,712)

Cash provided by (used in) operating activities (GAAP)	\$157,841	(\$78,132)	\$242,646	(\$53,501)
Net change in operating assets and liabilities	\$38,175	\$55,030	\$58,324	\$62,463
Cash provided by (used in) operating activities before changes in working capital (non-GAAP)	\$196,016	(\$23,102)	\$300,970	\$8,962
Expenditures on mineral properties, plant, and equipment	(\$59,455)	(\$38,176)	(\$104,962)	(\$72,211)
Free cash flow before changes in working capital (non-GAAP)	\$136,561	(\$61,278)	\$196,008	(\$63,249)

## Net Cash & Liquidity

<i>(in thousands)</i>	As of	
	June 30, 2025	December 31, 2024
Cash and cash equivalents (GAAP)	\$412,104	\$387,882
Restricted cash	\$0	—
Total cash (non-GAAP)	\$412,104	\$387,882

Face value of 2019 convertible note	\$230,000	\$230,000
Other debt	\$0	—
Total debt (non-GAAP)	\$230,000	\$230,000

Net cash (debt) (non-GAAP)	\$182,104	\$157,882
----------------------------	-----------	-----------

Cash and cash equivalents (GAAP)	\$412,104	\$387,882
Restricted cash	\$0	—
Total cash (non-GAAP)	\$412,104	\$387,882

Borrowing capacity on credit facility	\$400,000	\$400,000
Borrowing capacity on accordion feature of credit facility	\$100,000	\$100,000
Total Liquidity (non-GAAP) <sup>(1)</sup>	\$912,104	\$887,882

<sup>1</sup> Excludes \$0.4 million in letters of credit. Inclusive of these letters of credit, total liquidity is \$911.7 million

# Non-GAAP Reconciliation

## Cash Costs and AISC

	Three Months Ended June 30, 2025							
(in thousands, unless otherwise noted)	Marigold	CC&V	Seabee	Puna	Corporate	Total (Excluding Çöpler)	Çöpler	Consolidated
Cost of sales (GAAP) <sup>(1)</sup>	\$56,376	\$50,003	\$18,473	\$38,096	—	\$162,948	—	\$162,948
By-product credits	(\$33)	(\$501)	(\$15)	(\$12,146)	—	(\$12,695)	—	(\$12,695)
Treatment and refining charges	\$92	—	\$23	(\$669)	—	(\$554)	—	(\$554)
Cash costs (non-GAAP)	\$56,435	\$49,502	\$18,481	\$25,281	—	\$149,699	—	\$149,699
Sustaining capital and lease related expenditures	\$11,770	\$6,656	\$8,762	\$4,023	—	\$31,211	\$2,368	\$33,579
Sustaining exploration and evaluation expense	\$1,447	—	—	—	—	\$1,447	—	\$1,447
Care and Maintenance <sup>(2)</sup>	—	—	\$234	—	—	\$234	\$21,802	\$22,036
Reclamation cost accretion and amortization	\$691	\$3,838	\$555	\$2,545	—	\$7,629	\$423	\$8,052
General and administrative expense and stock-based compensation expense <sup>(3)</sup>	—	—	—	—	\$26,634	\$26,634	—	\$26,634
Total AISC (non-GAAP)	\$70,343	\$59,996	\$28,032	\$31,849	\$26,634	\$216,854	\$24,593	\$241,447
Gold sold (oz)	35,589	44,800	10,350	—	—	90,739	—	90,739
Silver sold (oz)	—	—	—	2,534,393	—	2,534,393	—	2,534
Gold equivalent sold (oz) <sup>(4)</sup>	35,589	44,800	10,350	25,997	—	116,736	—	116,736
Cost of sales per gold ounce sold	\$1,584	\$1,116	\$1,785	N/A	N/A	N/A	NA	N/A
Cost of sales per silver ounce sold	N/A	N/A	N/A	\$15.03	N/A	N/A	N/A	N/A
Cost of sales per gold equivalent ounce sold <sup>(4)</sup>	\$1,584	\$1,116	\$1,785	\$1,465	N/A	\$1,396	NA	\$1,396
Cash cost per gold ounce sold	\$1,586	\$1,105	\$1,786	N/A	N/A	N/A	NA	N/A
Cash cost per silver ounce sold	N/A	N/A	N/A	\$9.98	N/A	N/A	N/A	N/A
Cash cost per gold equivalent ounce sold <sup>(4)</sup>	\$1,586	\$1,105	\$1,786	\$972	N/A	\$1,282	NA	\$1,282
AISC per gold ounce sold	\$1,977	\$1,339	\$2,708	N/A	N/A	N/A	NA	N/A
AISC per silver ounce sold	N/A	N/A	N/A	\$12.57	N/A	N/A	N/A	N/A
AISC per gold equivalent ounce sold <sup>(4)</sup>	\$1,977	\$1,339	\$2,708	\$1,225	N/A	\$1,858	NA	\$2,068

<sup>1)</sup> Excludes depreciation, depletion, and amortization.

<sup>2)</sup> Care and maintenance expense only includes direct costs not associated with environmental reclamation and remediation costs, as depreciation is not included in the calculation of AISC.

<sup>3)</sup> General and administrative expense for the three months ended June 30, 2025 included \$6.4 million in share based compensation expense.

<sup>4)</sup> GEOs are calculated using the silver ounces sold multiplied by the ratio of the silver price to the gold price, using the average LBMA prices for the period. The Company does not include copper, lead, or zinc as they are considered by-products. GEOs sold may not re-calculate based on amounts presented in this table due to rounding.



# Non-GAAP Reconciliation

## 2025 Operating Guidance

(operating guidance 100% basis) <sup>(1)</sup>		Marigold	CC&V <sup>(2)</sup>	Seabee	Puna	Corporate	Total (Excluding Çöpler)	Çöpler	Consolidated
Gold Production	koz	160 – 190	90 – 110	70 – 80	—	—	320 – 380	—	320 – 380
Silver Production	Moz	—	—	—	8.00 – 8.75	—	8.00 – 8.75	—	8.00 – 8.75
<b>Gold Equivalent Production</b>	<b>koz</b>	<b>160 – 190</b>	<b>90 – 110</b>	<b>70 – 80</b>	<b>90 – 100</b>	<b>—</b>	<b>410 – 480</b>	<b>—</b>	<b>410 – 480</b>
Gold Sold	koz	160 – 190	90 – 110	70 – 80	—	—	320 – 380	—	320 – 380
Silver Sold	Moz	—	—	—	8.00 – 8.75	—	8.00 – 8.75	—	8.00 – 8.75
Gold Equivalent Sold	koz	160 – 190	90 – 110	70 – 80	90 – 100	—	410 – 480	—	410 – 480
<b>Cost of Sales (GAAP)</b>	<b>\$M</b>	<b>245 – 298</b>	<b>132 – 166</b>	<b>86 – 102</b>	<b>100 – 123</b>	<b>—</b>	<b>563 – 689</b>	<b>—</b>	<b>563 – 689</b>
By-Product Credits + Treatment & Refining Costs	\$M	—	(1)	—	(8)	—	(10)	—	(10)
<b>Cash Cost (non-GAAP) <sup>(3)</sup></b>	<b>\$M</b>	<b>245 – 298</b>	<b>131 – 165</b>	<b>86 – 102</b>	<b>92 – 114</b>	<b>—</b>	<b>554 – 679</b>	<b>—</b>	<b>554 – 679</b>
Sustaining Capital Expenditures <sup>(4)</sup>	\$M	45	27	32	15	—	119	—	119
Reclamation Cost Accretion & Amortization	\$M	3	9	3	9	—	24	—	24
General & Administrative	\$M	—	—	—	—	60 – 65	60 – 65	—	60 – 65
Share-Based Compensation <sup>(5)</sup>	\$M	—	—	—	—	30 – 35	30 – 35	—	30 – 35
Care & Maintenance <sup>(6)</sup>	\$M	—	—	—	—	—	—	80 – 100	80 – 100
<b>All-In Sustaining Cost (non-GAAP) <sup>(3)</sup></b>	<b>\$M</b>	<b>293 – 346</b>	<b>166 – 201</b>	<b>121 – 137</b>	<b>115 – 138</b>	<b>90 – 100</b>	<b>786 – 921</b>	<b>80 – 100</b>	<b>866 – 1,021</b>
Cost of Sales per Ounce (GAAP) <sup>(3)</sup>	\$/oz	1,530 – 1,570	1,470 – 1,510	1,230 – 1,270	12.50 – 14.00	—	1,375 – 1,435	—	1,375 – 1,435
Cash Cost per Ounce (non-GAAP) <sup>(3)</sup>	\$/oz	1,530 – 1,570	1,460 – 1,500	1,230 – 1,270	11.35 – 12.85	—	1,350 – 1,410	—	1,350 – 1,410
All-In Sustaining Cost per Ounce (non-GAAP) <sup>(3)</sup>	\$/oz	1,800 – 1,840	1,800 – 1,840	1,710 – 1,750	14.25 – 15.75	—	1,890 – 1,950	—	2,090 – 2,150

1) Figures may not add due to rounding.

2) CC&V figures are presented as of February 28, 2025 onwards to account for attributable production to SSR Mining following the close of the CC&V transaction. Prior to the closing of the acquisition, CC&V produced 28,000 ounces of gold. For the full year, inclusive of ounces produced under Newmont's ownership, CC&V is expected to produce between 118,000 and 138,000 ounces of gold.

3) The Company reports the non-GAAP financial measures of cash costs and AISC per ounce of gold sold to manage and evaluate operating performance at its mines. AISC includes reclamation cost accretion and amortization and certain lease payments. Total AISC includes G&A costs and share-based compensation, but excludes any care & maintenance costs incurred at Çöpler. Consolidated AISC reflects cash care & maintenance costs of approximately \$20 - \$25 million per quarter incurred at Çöpler until the mine is restarted.

4) Refer to "2025 Capital Guidance" table within our press release dated March 31, 2025 for a breakdown of sustaining exploration and evaluation expenditures. No material capital expenditures are expected at Çöpler until the mine is restarted.

5) Share-based compensation guidance uses a reference price of approximately US\$15 per share.

6) Reflects the cash component of care & maintenance expenses that would be incurred at Çöpler in the event the operation did not restart within 2025. SSR Mining continues to work closely with the relevant authorities in Türkiye to advance the restart of the Çöpler mine, but at this time the Company is not able to estimate or predict when and under what conditions operations will resume.

# Non-GAAP Reconciliation

## Adjusted Attributable Net Income per Share

(in thousands, except per share)	Three Months Ended March 31,		Six Months Ended March 31,	
	2025	2024	2025	2024
Net income (loss) attributable to SSR Mining shareholders (GAAP)	\$90,075	\$9,693	\$148,856	(\$277,389)
Interest saving on 2019 notes, net of tax	\$1,247	—	\$2,479	—
Net income (loss) used in the calculation of diluted net income per share	\$91,322	\$9,693	\$151,335	(\$277,389)
Weighted-average shares used in the calculation of net income (loss) per share	202,774	202,774	202,598	202,244
Basic	216,989	216,989	216,691	202,244
Diluted				
Net income (loss) per share attributable to SSR Mining shareholders (GAAP)	\$0.44	\$0.05	\$0.73	(\$1.37)
Basic	\$0.42	\$0.04	\$0.70	(\$1.37)
Diluted				
Adjustments:				
CC&V transaction and integration costs	\$4,958	—	\$11,753	—
Effects of the Çöpler Incident <sup>(1)</sup>	\$52,179	—	\$53,430	\$321,954
Insurance proceeds received related to the Çöpler Incident <sup>(2)</sup>	(\$35,527)	—	(\$35,527)	—
Changes in fair value of marketable securities	(\$2,065)	(\$3,602)	(\$3,721)	(\$6,419)
Income tax impact related to above adjustments	\$1,857	\$573	\$954	\$1,021
Inflationary impacts on tax balances	(\$1,403)	\$825	(\$4,098)	(\$9,168)
Adjusted net income attributable to SSR Mining shareholders (Non-GAAP)	\$110,074	\$7,489	\$171,647	\$29,999
Adjusted net income per share attributable to SSR Mining shareholders (Non-GAAP)				
Basic	\$0.54	\$0.04	\$0.85	\$0.15
Diluted <sup>(3)</sup>	\$0.51	\$0.04	\$0.80	\$0.15

<sup>1)</sup> For the three months ended June 30, 2025, the effects of the Çöpler Incident represent (1) reclamation costs of \$7.5 million (presented net of pre-tax attributable non-controlling interest of \$1.9 million) and remediation costs of \$42.8 million (presented net of pre-tax attributable non-controlling interest of \$10.7 million) and (2) contingencies and expenses of \$1.8 million (presented net of pre-tax attributable non-controlling interest of \$0.5 million).

For the six months ended June 30, 2025, the effects of the Çöpler Incident represent (1) reclamation costs of \$7.5 million (presented net of pre-tax attributable non-controlling interest of \$1.9 million) and remediation costs of \$42.8 million (presented net of pre-tax attributable non-controlling interest of \$10.7 million) and (2) contingencies and expenses of \$3.1 million (presented net of pre-tax attributable non-controlling interest of \$0.8 million).

For the six months ended June 30, 2024, the effects of the Çöpler Incident represent (1) reclamation costs of \$9.0 million (presented net of pre-tax attributable non-controlling interest of \$2.2 million) and remediation costs of \$209.3 million (presented net of pre-tax attributable non-controlling interest of \$52.4 million); (2) impairment charges of \$91.4 million (presented net of pre-tax attributable non-controlling interest of \$22.8 million) related to plans to permanently close the heap leach pad; and (3) contingencies and expenses of \$12.3 million (presented net of pre-tax attributable non-controlling interest of \$3.0 million).

<sup>2)</sup> For the three and six months ended June 30, 2025, represents \$35.5 million (presented net of pre-tax attributable non-controlling interest of \$8.9 million) of business interruption insurance proceeds received associated with the Çöpler Incident.

<sup>3)</sup> Adjusted net income (loss) per diluted share attributable to SSR Mining shareholders is calculated using diluted common shares, which are calculated in accordance with GAAP. For the three months ended June 30, 2024, \$1.2 million interest saving on 2019 Notes, net of tax, and dilutive potential shares of approximately 12.9 million were excluded from the computation of diluted loss per common share attributable to SSR Mining shareholders in the Condensed Consolidated Statement of Operations as they were antidilutive. For the six months ended June 30, 2024, \$2.5 million interest saving on 2019 Notes, net of tax, and dilutive potential shares of approximately 12.9 million were excluded from the computation of diluted loss per common share attributable to SSR Mining shareholders in the Condensed Consolidated Statement of Operations as they were antidilutive. These interest savings and shares were included in the computation of adjusted net income (loss) per diluted share attributable to SSR Mining shareholders for the six months ended June 30, 2024.



**SSR Mining Inc.**

**Website: [www.ssrmining.com](http://www.ssrmining.com)**

**Email: [invest@ssrmining.com](mailto:invest@ssrmining.com)**

**Toll-free: +1 (888) 338-0046**

**SSRM:NASDAQ / TSX**