

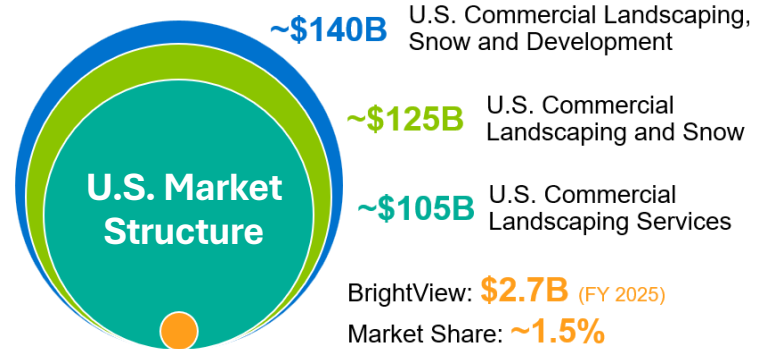
BrightView Investor Snapshot

Business Overview

- **Ticker:** NYSE: BV
- **Founded:** 1939
- **Headquartered:** Blue Bell, PA
- **Market Cap:** ~\$2 Billion*
- **Employees:** ~18,000
- **Jobs:** ~20,000
- **Branch Locations:** 265+

* Based on 148.2M Adjusted Shares Outstanding and \$11.77 share price as of 5/1/26

	Maintenance Services	Development Services
Example Services	Landscape Services Tree Care Irrigation Snow Services	Landscape Creation Landscape Architecture Tree Moving Pool and Water
Segment Revenues	<p>~70% of 2025 Revenue</p>	<p>~30% of 2025 Revenue</p>



Source: IBIS Industry Reports (April 2025), Landscaping and Snow Removal (May 2025)

Key Investment Highlights

Market leader with scale-driven advantages

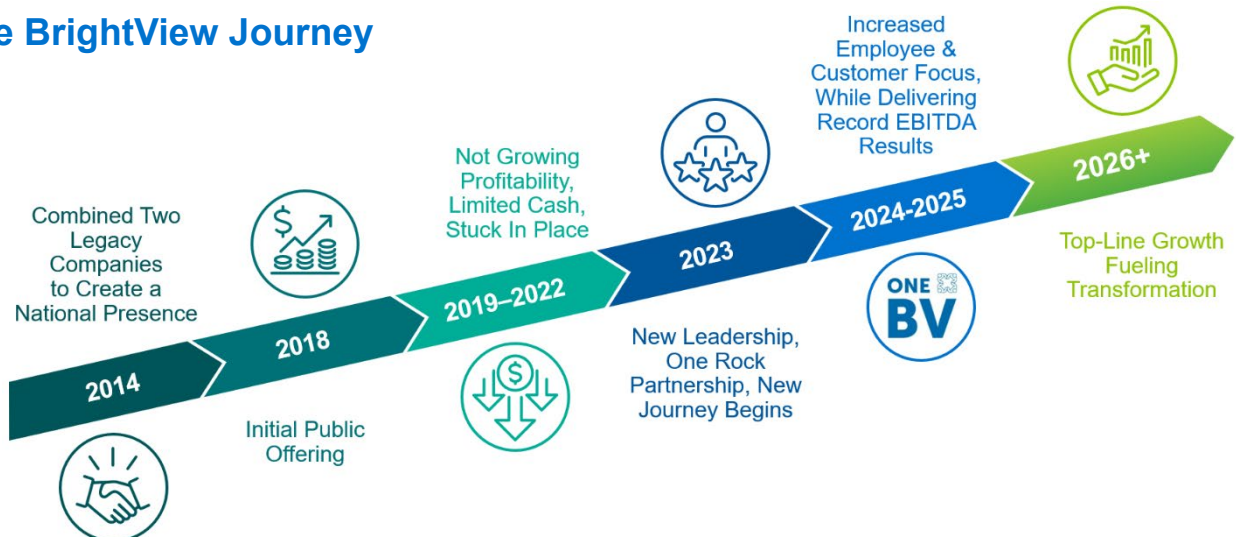
Employer and service provider of choice

Sustainable business model with recurring revenue

Strategic initiatives focused on profitable growth

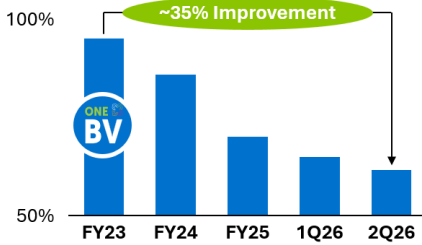
Clear path to achieve long-term targets

The BrightView Journey

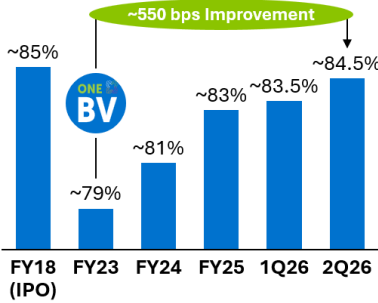


Key Metrics

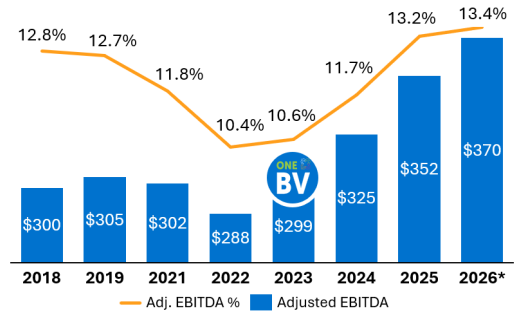
TTM Frontline Employee Turnover



TTM Land Maintenance Customer Retention

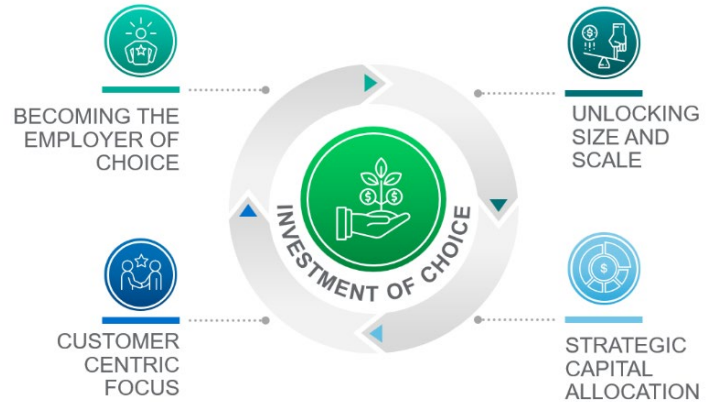


Adjusted EBITDA & Margin



* Midpoint of 2026 Guidance as of May 2026 Earnings Call

Delivering Long-Term Profitable Growth



1. From 2025 Investor Day

* ~\$450M+ in M&A

** Free Cash Flow Conversion = Adjusted Free Cash Flow / EBITDA

Connect With Us

Contact the Investor Relations team and stay up to date on company news, financial releases, and investor events:

ir@brightview.com

investor.brightview.com

[BrightView LinkedIn](#)

2025 Investor Day

Want to learn more? You can view our 2025 Investor Day presentation here: [BrightView Investor Day](#)

This resource provides a comprehensive review of BrightView's long-term strategy and financial objectives

Our Latest Quarterly Earnings

View our latest earnings press release, presentation and webcast here:

[BrightView Quarterly Reports](#)

