



A FREE CASH FLOW FOCUSED GOLD PRODUCER

January 2021

Cautionary Notes



Cautionary Note Regarding Forward-Looking Statements

Except for statements of historical fact relating to us, certain statements contained in this presentation constitute forward-looking information, future oriented financial information, or financial outlooks (collectively "forward-looking information") within the meaning of Canadian securities laws. Forward-looking information may be contained in this document and our other public filings. Forward-looking information relates to statements concerning our outlook and anticipated events or results and in some cases, can be identified by terminology such as "may", "will", "could", "should", "expect", "plan", "anticipate", "believe", "intend", "estimate", "projects", "predict", "potential", "continue" or other similar expressions concerning matters that are not historical facts.

Forward-looking statements in this presentation are based on certain key expectations and assumptions made by us. Although we believe that the expectations and assumptions on which such forward-looking statements are based are reasonable, undue reliance should not be placed on the forward-looking statements because we can give no assurance that they will prove to be correct. Forward-looking statements are subject to various risks and uncertainties which could cause actual results and experience to differ materially from the anticipated results or expectations expressed in this presentation. The key risks and uncertainties include, but are not limited to: local and global political and economic conditions; governmental and regulatory requirements and actions by governmental authorities, including changes in government policy, government ownership requirements, changes in environmental, tax and other laws or regulations and the interpretation thereof; developments with respect to the coronavirus disease 2019 ("COVID-19") pandemic, including the duration, severity and scope of the pandemic and potential impacts on mining operations; and other risk factors detailed from time to time in our reports filed with the Canadian securities regulatory authorities.

Forward-looking statements in this presentation include statements concerning, among other things: forecasts; outlook; timing of production; production, cost, operating and capital expenditure guidance; our intention to return excess attributable free cash flow to shareholders; the timing and implementation of the dividend policy; the granting of any 'Supplemental Dividends' or the implementation of any share buyback program or other supplements to the 'Base Dividend'; statements regarding plans or expectations for the declaration of future dividends and the amount thereof; future cash costs and all-in sustaining costs ("AISC") per payable ounce of gold, silver and other metals sold; the prices of gold, silver and other metals; mineral resources, mineral reserves, realization of mineral reserves, and the existence or realization of mineral resource estimates; our ability to discover new areas of mineralization; the timing and extent of capital investment at our operations; the timing and extent of capitalized stripping at our operations; the timing of production and production levels and the results of our exploration and development programs;; current financial resources being sufficient to carry out plans, commitments and business requirements for the next twelve months; movements in commodity prices not impacting the value of any financial instruments; estimated production rates for gold, silver and other metals produced by us; the estimated cost of sustaining capital; availability of sufficient financing; receipt of regulatory approvals; the timing of studies, announcements, and analysis; the timing of construction and development of proposed mines and process facilities; ongoing or future development plans and capital replacement; estimates of expected or anticipated economic returns from our mining projects, including future sales of metals, concentrate or other products produced by us and the timing thereof; our plans and expectations for our properties and operations; and all other timing, exploration, development, operational, financial, budgetary, economic, legal, social, environmental, regulatory, and political matters that may influence or be influenced by future events or conditions.

Such forward-looking information and statements are based on a number of material factors and assumptions, including, but not limited in any manner to, those disclosed in any other of our filings, and include: the inherent speculative nature of exploration results; the ability to explore; communications with local stakeholders; maintaining community and governmental relations; status of negotiations of joint ventures; weather conditions at our operations; commodity prices; the ultimate determination of and realization of Mineral Reserves; existence or realization of Mineral Resources; the development approach; availability and receipt of required approvals, titles, licenses and permits; sufficient working capital to develop and operate the mines and implement development plans; access to adequate services and supplies; foreign currency exchange rates; interest rates; access to capital markets and associated cost of funds; availability of a qualified work force; ability to negotiate, finalize, and execute relevant agreements; lack of social opposition to our mines or facilities; lack of legal challenges with respect to our properties; the timing and amount of future production; the ability to meet production, cost, and capital expenditure targets; timing and ability to produce studies and analyses; capital and operating expenditures; economic conditions; availability of sufficient financing; the ultimate ability to mine, process, and sell mineral products on economically favorable terms; and any and all other timing, exploration, development, operational, financial, budgetary, economic, legal, social, geopolitical, regulatory and political factors that may influence future events or conditions. While we consider these factors and assumptions to be reasonable based on information currently available to us, they may prove to be incorrect.

You should not place undue reliance on forward-looking information and statements. Forward-looking information and statements are only predictions based on our current expectations and our projections about future events. Actual results may vary from such forward-looking information for a variety of reasons including, but not limited to, risks and uncertainties disclosed in our filings on our website at www.ssrmining.com, on SEDAR at www.sedar.com, on EDGAR at www.sec.gov and on the ASX at www.asx.com.au and other unforeseen events or circumstances. Other than as required by law, we do not intend, and undertake no obligation to update any forward-looking information to reflect, among other things, new information or future events.

All references to "\$" in this presentation are to U.S. dollars unless otherwise stated.

Qualified Persons

Except as otherwise set out herein, the scientific and technical information contained in this presentation relating to each of the: Çöpler has been reviewed and approved by Robert L. Clifford and Dr. Cengiz Y. Demirci, each of whom is a qualified person under National Instrument 43-101 – Standards of Disclosure for Mineral Projects ("NI 43-101") and our employee; Marigold has been reviewed and approved by Greg Gibson and James N. Carver, each of whom is a SME Registered Member, a qualified person under NI 43-101 and our employee; Seabee has been reviewed and approved by Samuel Mah, P.Eng., and Jeffrey Kulas, P. Geo., each of whom is a qualified person under NI 43-101 and our employee; and Puna has been reviewed and approved by Robert Gill, P.Eng. whom is a qualified person under NI 43-101 and our employee. The qualified persons have verified the information disclosed herein, including the sampling, preparation, security and analytical procedures underlying such information, and are not aware of any significant risks and uncertainties that could be expected to affect the reliability or confidence in the information discussed herein.

Cautionary Note to U.S. Investors

This presentation includes Mineral Reserves and Mineral Resources classification terms that comply with reporting standards in Canada and the Mineral Reserves and the Mineral Resources estimates are made in accordance with NI 43-101 - Standards of Disclosure for Mineral Projects ("NI 43-101"). NI 43-101 is a rule developed by the Canadian Securities Administrators that establishes standards for all public disclosure an issuer makes of scientific and technical information concerning mineral projects. These standards differ significantly from the requirements of the SEC set out in the SEC rules that are applicable to domestic United States reporting companies. Consequently, Mineral Reserves and Mineral Resources information included in this presentation is not comparable to similar information that would generally be disclosed by domestic U.S. reporting companies subject to the reporting and disclosure requirements of the SEC. Accordingly, information concerning mineral deposits set forth herein may not be comparable with information made public by companies that report in accordance with U.S. standards.

Cautionary Note Regarding Non-GAAP Measures

This presentation includes certain terms or performance measures commonly used in the mining industry that are not defined under International Financial Reporting Standards ("IFRS"), including free cash flow, cash costs and AISC per payable ounce of gold and silver sold, realized metal prices, earnings before interest, taxes, depreciation and amortization ("EBITDA"), adjusted attributable net income, adjusted basic attributable earnings per share, consolidated cash and consolidated net cash. Non-GAAP measures do not have any standardized meaning prescribed under IFRS and, therefore, they may not be comparable to similar measures employed by other companies. We believe that, in addition to conventional measures prepared in accordance with IFRS, certain investors use this information to evaluate our performance. The data presented is intended to provide additional information and should not be considered in isolation or as a substitute for measures of performance prepared in accordance with IFRS. Readers should refer to the endnotes in this presentation for further information regarding how we calculate certain of these measures. Readers should also refer to our management's discussion and analysis, available under our corporate profile at www.sedar.com or on our website at www.ssrmining.com, under the heading "Non-GAAP Financial Measures" for a more detailed discussion of how we calculate such measures and a reconciliation of certain measures to GAAP terms.

Diversified Portfolio of High Quality, Long-Life Assets

Operations and projects across six jurisdictions



High Quality Diversified Portfolio

- 2020 production of 711 koz AuEq ⁽¹⁾
- 2021 production: 720 – 800 koz AuEq ⁽¹⁾
- 9+ Moz AuEq Mineral Reserves ⁽²⁾
- 21+ year cornerstone asset life ⁽³⁾

Free Cash Flow Leader

- Peer leading free cash flow generation / yield ^(4,5)
- Two-tiered capital return policy implemented
- Base dividend implies ~\$60/oz / ~1.2% yield

Balance Sheet Strength

- Consolidated Cash: US\$773M ⁽⁶⁾
- Consolidated Net Cash: US\$315M ⁽⁶⁾
- Ability to fund organic growth

Organic Growth Potential

- High return, low capital intensity near-term growth
- 24+ Moz AuEq M&I Mineral Resources ⁽²⁾
- 5+ Moz AuEq Inferred Mineral Resources ⁽²⁾
- Six district scale land packages totalling 375,000+ ha

Experienced Leadership

- Track record of value creation, achieving guidance & building assets
- Diverse mining and processing skill set



- 3 Operating Gold Assets: Çöpler, Marigold & Seabee
- 1 Operating Silver Asset: Puna
- 2 Greenfield Projects: Pitarrilla & San Luis
- 20+ Near-Mine and Stand-Alone Exploration Properties
- 4 Public Company Equity Interests
- 19 Royalty Interests

Developing a Sustainable Legacy

Successful culture focused on discipline and integrity ⁽⁸⁾

Environmental Responsibility



- ✓ Zero significant environmental incidents or spills
- ✓ Focus on tailings management
- ✓ Excellence in cyanide management

Turkey

- Investigating introduction of solar power

U.S.

- First mine in the world to be certified under the International Cyanide Management Code

Canada

- Reduced cyanide consumption by 60% under SSR Mining ownership

Argentina

- Extensive EIA process

Safe Production



- ✓ Zero fatalities
- ✓ COVID-19 management plans at all sites and offices
- ✓ Improved Total Recordable Injury Frequency Rate
- ✓ Continuous improvement in critical controls

Turkey

- Awarded the 2020 SME Health and Safety Operational Excellence Award
- 22M lost-time injury free hours
- Total Recordable Injury Frequency Rate (per million hours worked) of 2.57

U.S., Canada, Argentina

- Total Recordable Injury Frequency Rate (per 200,000 hours worked) of 2.18
- No diagnosed occupational illnesses

Governance, Social Performance and Diversity



- ✓ Material investment in communities
- ✓ Social development funds
- ✓ Focus on local procurement and employment
- ✓ Diversity and inclusion across the organization

Turkey

- +\$1.3B total procurement spend since 2015
- 99% of workforce is Turkish
- 142 academic scholarships (50% female)

U.S., Canada

- Diversity scholarships at universities
- 34% of employees identify as Indigenous

Argentina

- 100% of new hires from local communities and 30% of new hires are female
- Six school renovations since 2012

2021 Outlook

Operational delivery, free cash flow generation, capital returns and growth



Corporate

Priorities

- Continued operational delivery and free cash flow generation across all mines
- Health & safety focus across the portfolio
- Capital returns

Assets

Çöpler

- Flotation plant construction and ramp-up
- Ardich exploration and development
- C2 exploration and advancement

Marigold

- Ongoing cost reduction and continuous improvement initiatives
- Oxide exploration targeting higher grades and conversion at Mackay, Valmy, New Millennium, Trenton Canyon and Buffalo Valley
- Sulfide exploration and evaluation

Seabee

- Increase mining rates to exploit latent mill capacity
- Gap Hanging Wall Mineral Resource conversion
- Seabee and Fisher exploration and resource development

Puna

- Achieve mill throughput rates above 4,000 tonnes per day
- Implement and integrate owner-operated ore transport fleet

2021 Production Guidance ⁽¹⁾

Çöpler	Au koz	310 – 340
Marigold	Au koz	235 – 265
Seabee	Au koz	95 – 105
Puna	Ag Moz	6.0 – 7.0
Consolidated	AuEq koz	720 – 800

2021 AISC Guidance ^(1,7)

Çöpler	\$ / Au oz	\$760 – \$810
Marigold	\$ / Au oz	\$1,250 - \$1,290
Seabee	\$ / Au oz	\$860 - \$910
Puna	\$ / Ag oz	\$16.00 - \$17.50
Consolidated	\$ / AuEq oz	\$1,050 - \$1,110

Growth Capital ⁽¹⁾

Capital Expenditures	\$M	\$33
Exploration	\$M	\$54
Consolidated	\$M	\$87

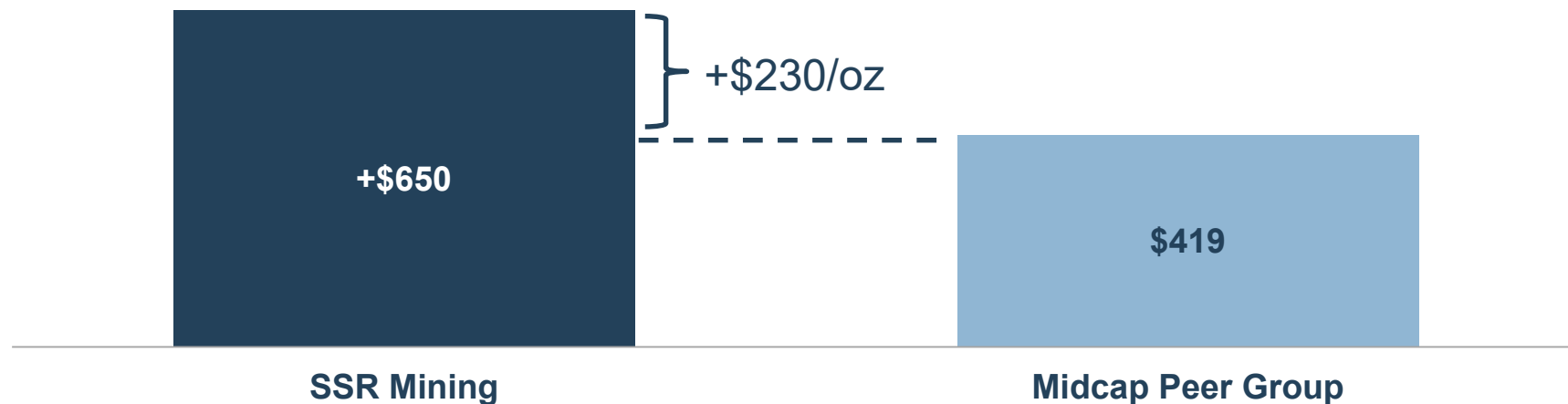
Free Cash Flow Leader

Peer leading free cash flow generation and yield



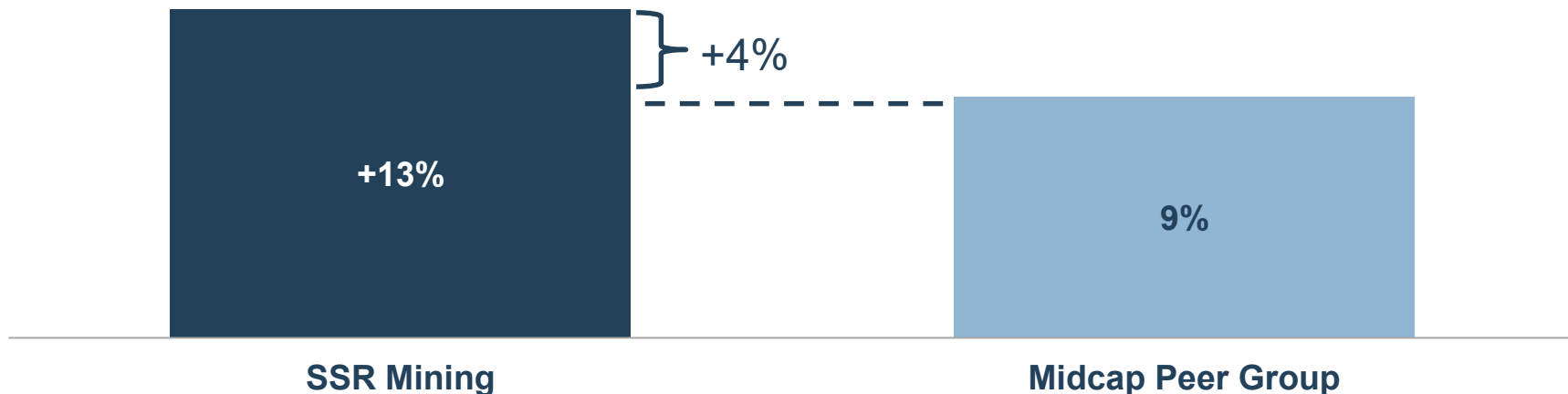
2021E Consensus Free Cash Flow Per Ounce ^(4,5)

US\$ per ounce | Consensus Free Cash Flow (100% basis) / Consensus Ounces Produced



2021E Consensus Free Cash Flow Yield ^(4,5)

% | Consensus Free Cash Flow (100% basis) / Market Capitalization



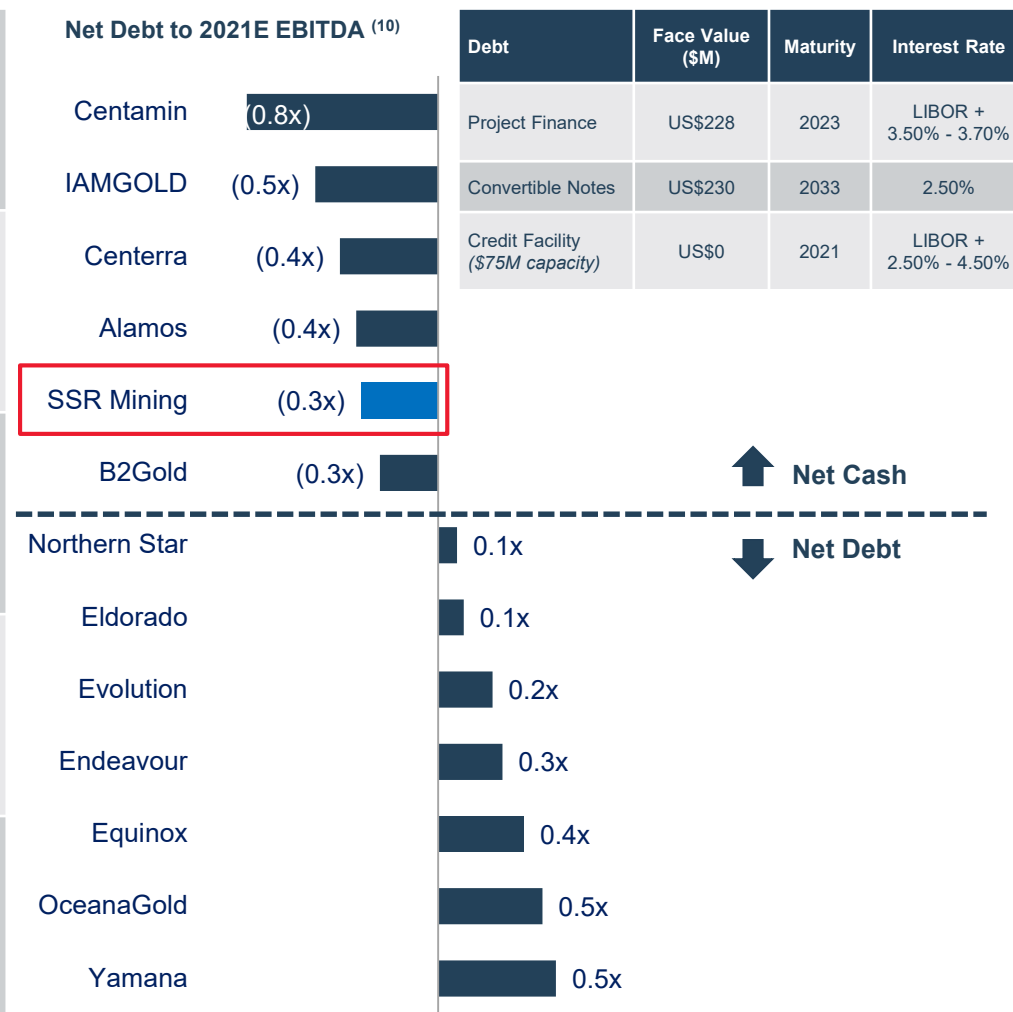
Significant Financial Strength

Robust balance sheet and credit metrics



Over \$770M of Consolidated Cash ⁽⁶⁾

Market Capitalization ⁽⁹⁾	~\$4B
Debt ⁽⁶⁾	\$458M
Consolidated Cash ⁽⁶⁾	\$773M
Consolidated Net Debt (Cash) ⁽⁶⁾	(\$315)M
Net Debt to '21 Consensus EBITDA ⁽¹⁰⁾	(0.3x)



Capital Return Policy Announced



Capital Allocation Strategy

Continued investment in high-return growth

Maintain peer leading financial strength

Provide sustainable capital returns to shareholders

Base Dividend

Quarterly 'Base Dividend' of \$0.05 per share

Commencing in Q1 2021

Yield of approximately 1.2%

Implies ~\$60/oz



Supplemental Dividend

Periodically assessed should gold price stay
above Mineral Reserve price

Based on trailing 12-month excess free cash flow

Share Buybacks

Evaluated periodically in lieu of
Supplemental Dividend

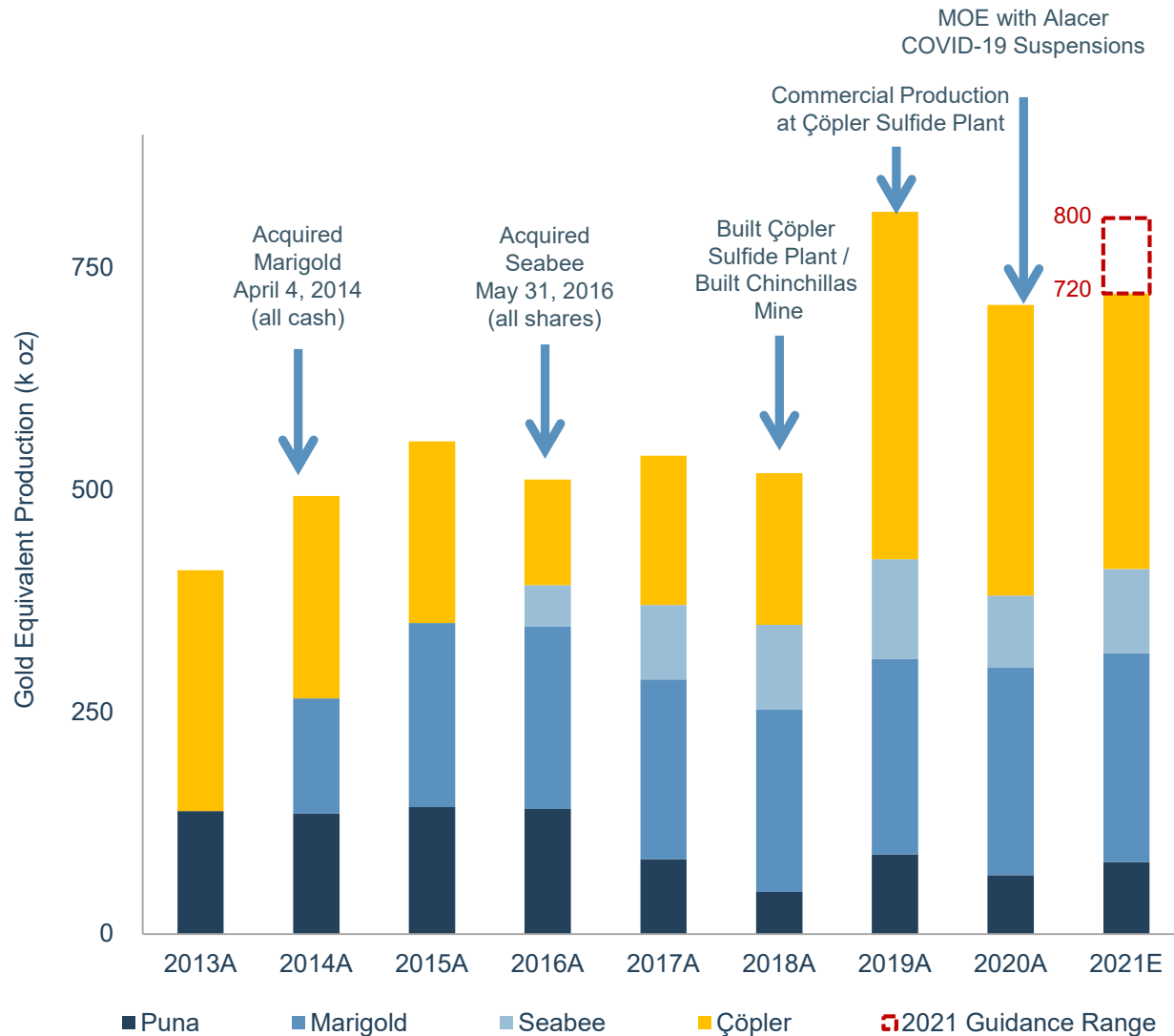
Dependent on prevailing market conditions and
equity valuations

Track Record of Growth

Driven by organic growth and M&A

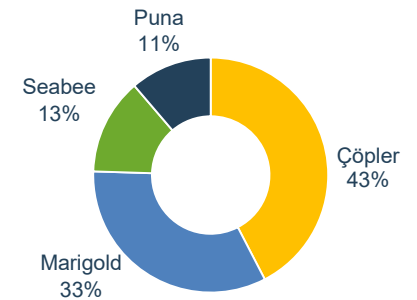


Production Growth ⁽¹¹⁾

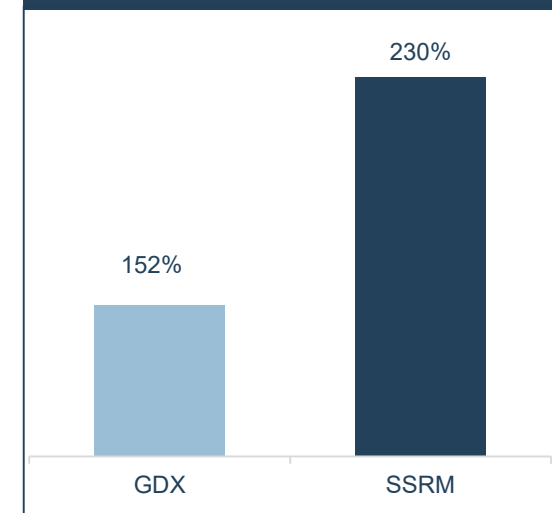


Production by Asset

2021 Guidance Midpoint
AuEq. (100% Basis)



5-Year Performance ⁽¹²⁾



2021 Exploration and Resource Development

Mineral Resource conversion, expansion and development

Near mine exploration portfolio poised to deliver low capital intensity organic growth

Çöpler District: \$33M

Ardich

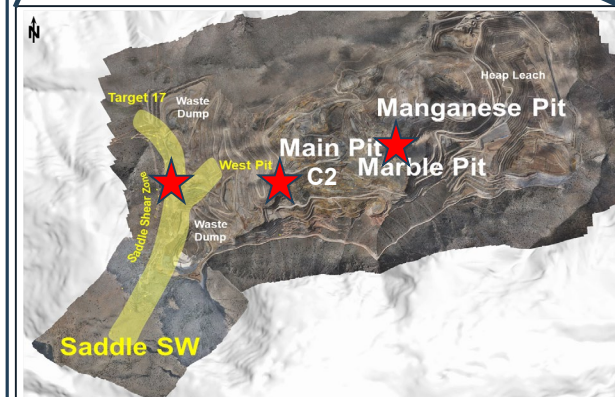
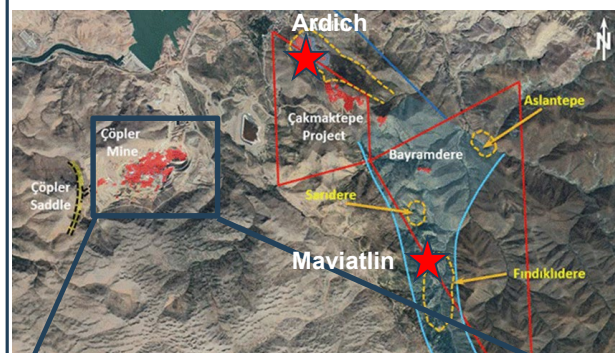
Çöpler
Saddle

C2

In-Pit

Maviatlin
Belt

Turkey
Regional



Marigold: \$18M

Mackay

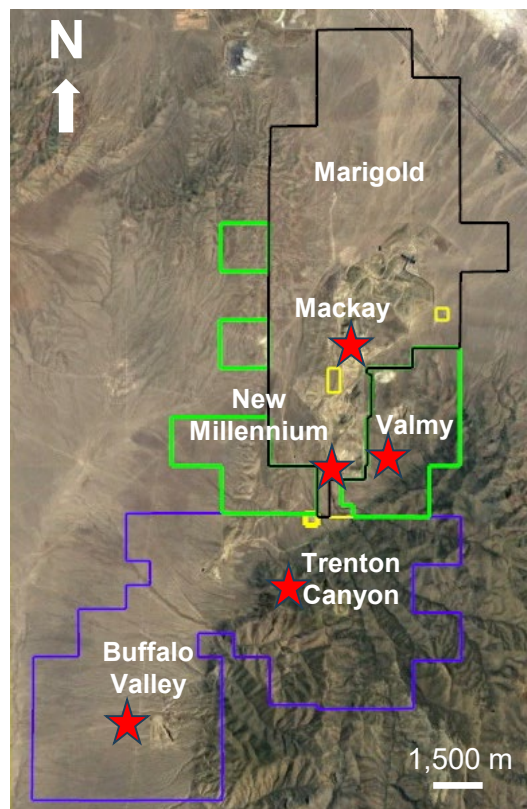
New
Millennium

Trenton
Canyon

Valmy

Buffalo
Valley

T. Canyon
sulfides



Seabee: \$8M

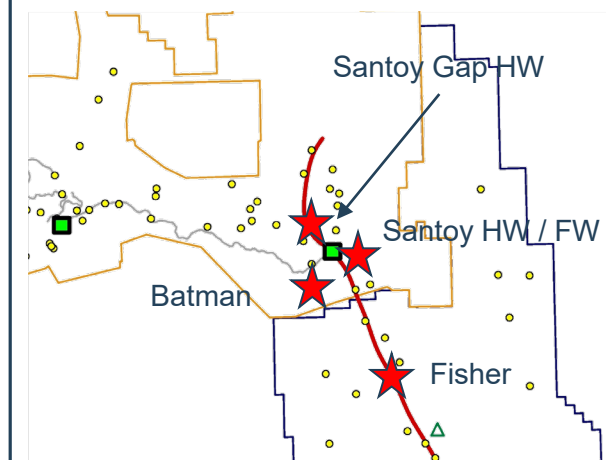
Santoy
Gap HW

Santoy
HW / FW

Fisher

Batman

Amisk



Other: \$6M

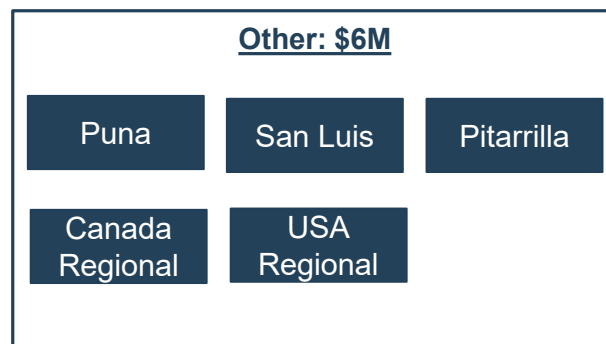
Puna

San Luis

Pitarrilla

Canada
Regional

USA
Regional



Overview of Assets

Çöpler: Overview

Location: Turkey **Stage:** Production **Ownership:** 80%
Mining: Open pit **Processing:** Heap leach, POX **Land:** ~17,000 ha

- 'Tier 1' gold operation that can process both oxide and sulfide ore
- +300kozpa gold production over next-5 years ⁽³⁾
- +21 year mine life ⁽³⁾
- CDM technical report released 4Q20 demonstrating robust economics
- Strong 4Q20 gold production of 83koz



POX Plant

2021 Priorities

- Flotation plant construction and expected ramp-up beginning mid-year 2021
- Ardich exploration and concurrent development towards first production in 2023
- C2 exploration and advancement, focusing on expandable development plan
 - Metallurgical testwork on-going
- Exploration initiatives across the Çöpler district

		2020 Guidance ⁽¹³⁾	2020 Actual	2021 Guidance ⁽¹⁾
Gold Production	Au koz	310 – 360	327	310 – 340
Mine-site AISC ⁽⁷⁾	\$ / oz	\$710 – \$760	-	\$760 – \$810

Reserves & Resources ⁽²⁾	Tonnes (Mt)	Grade (Au gpt)	Ounces (Au koz)
Proven & Probable	59	2.11	4,011
Measured & Indicated (inclusive of Proven & Probable)	137	1.69	7,416
Inferred	74	1.30	3,094

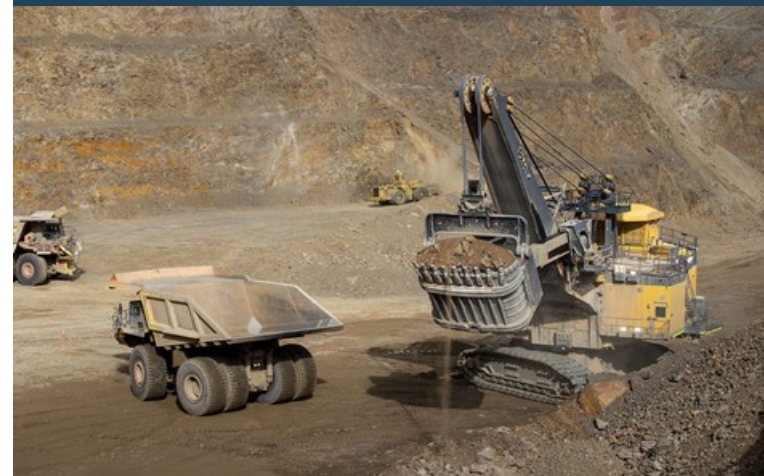
Marigold: Overview

Location: Nevada, USA **Stage:** Production **Ownership:** 100%

Mining: Open pit **Processing:** Run-of-mine, heap leach **Land:** ~20,000 ha

- Continuous operation since 1989, over 4M ounces of gold produced
- Oxide Mineral Reserves support mine life to early 2030's
- Track record of Mineral Reserves replacement and expansion
- Ongoing fleet upgrades leading to higher efficiencies
- Regional exploration opportunities at Marigold, Valmy, T. Canyon
- Quarterly record 77koz of gold production in 4Q20

Marigold Rope Shovel



2021 Priorities

- Ongoing cost reduction and continuous improvement initiatives
- Oxide exploration targeting higher grades and conversion at Mackay, Valmy, New Millennium, Trenton Canyon and Buffalo Valley
- Sulfide exploration and evaluation

		2020 Guidance ⁽¹³⁾	2020 Actual	2021 Guidance ⁽¹⁾
Gold Production	Au koz	225 – 240	234	235 – 265
Mine-site AISC ⁽⁷⁾	\$ / oz	\$1,170 - \$1,230	-	\$1,250 - \$1,290

Reserves & Resources ⁽²⁾	Tonnes (Mt)	Grade (Au gpt)	Ounces (Au koz)
Proven & Probable	229	0.49	3,887
Measured & Indicated (inclusive of Proven & Probable)	302	0.48	4,942
Inferred	16	0.35	182

Seabee: Overview

Location: Saskatchewan, Canada **Stage:** Production **Ownership:** 100%

Mining: Underground **Processing:** Gravity concentration, cyanide leaching **Land:** ~60,000 ha (including earn-in)

- One of the highest-grade underground mines in Canada (>10 g/t) ⁽²⁾
- Continuous operation since 1991
- Mill recoveries in excess of 98%+
- Santoy Gap Hanging Wall discovery could support increased throughput
- Tailings storage facility expansion provides capacity through early 2030's
- Strong 4Q20 gold production of 32koz

Seabee Mill Aerial



2021 Priorities

- Increase mining rates to exploit latent mill capacity
- Gap Hanging Wall Mineral Resource conversion
- Seabee and Fisher exploration and resource development

		2020 Guidance ⁽¹³⁾	2020 Actual	2021 Guidance ⁽¹⁾
Gold Production	Au koz	80 – 90	82	95 – 105
Mine-site AISC ⁽⁷⁾	\$ / oz	\$770 - \$820	-	\$860 - \$910

Reserves & Resources ⁽²⁾	Tonnes (Mt)	Grade (Au gpt)	Ounces (Au koz)
Proven & Probable	1.5	10.17	500
Measured & Indicated (inclusive of Proven & Probable)	3.1	10.61	1,050
Inferred	2.1	8.50	583

Puna: Overview

Location: Argentina	Stage: Production	Ownership: 100%
Mining: Open pit	Processing: Flotation	Land: ~10,000 ha

- Constructed on-time, on-budget in 2018
- Current mine life to 2025 ⁽¹⁴⁾
- ~75% of revenue from silver ⁽¹⁴⁾
- Operating steady-state after December 2018 commercial production
- Produced 5.6Moz of silver in 2020, exceeding updated full-year guidance

Chinchillas Mine



2021 Priorities

- Continue steady state production with focus on increasing productivity
- Achieve mill throughput rates above 4,000 tonnes per day
- Implement and integrate owner-operated ore transport fleet

		2020 Guidance ⁽¹³⁾	2020 Actual	2021 Guidance ⁽¹⁾
Silver Production	Ag Moz.	4.9 – 5.3	5.6	6.0 – 7.0
Mine-site AISC ⁽⁷⁾	\$ / oz.	\$15.00 - \$17.00	-	\$16.00 - \$17.50
Reserves & Resources ⁽²⁾	Tonnes (Mt)	Grade (Ag gpt)	Ounces (Ag Moz)	
Proven & Probable	10	149	49.7	
Measured & Indicated (inclusive of Proven & Probable)	29	119	110.7	
Inferred	23	57	42.7	

Appendix

Executive Team and Board of Directors

Depth of experience and track record of delivery



Executive Team



Rodney Antal
President, Chief
Executive Officer



Stewart Beckman
EVP, Chief
Operating Officer



Edward Farid
EVP, Chief Corporate
Development Officer



Gregory Martin
EVP, Chief
Financial Officer



Michael Sparks
EVP, Chief Legal &
Administrative Officer

Board of Directors



Michael Anglin
Chairman



Thomas Bates
Director



Brian Booth
Director



Edward Dowling
Director



Simon Fish
Director



Alan Krusi
Director



Beverlee Park
Director



Kay Priestly
Director



Elizabeth Wademan
Director

COVID-19 Response and Impact

Protection of our employees & communities is our highest priority



COVID-19 Management Plan

- To mitigate risks to communities, employees and our business, have implemented policies and protocols in response to the COVID-19 pandemic
- All operations continue to work with national and local authorities in accordance with applicable regulations and remain vigilant with respect to on-site activities to protect the health and safety of our employees and stakeholders

Marigold and Çöpler

- Operating with limited impact from COVID-19
- Çöpler mine operator availability suffered resulting in revised mine plan
- Implemented numerous measures to protect employees:
 - Quarantining
 - Testing
 - Ensuring physical distancing
 - Additional protective equipment

Seabee

- Phased re-start in Q3 2020
- July 2020: ore extraction and development rates ramped up
- August 2020: milling operations re-commenced
- Operations have met or exceeded pre-COVID-19 rates since August 2020
- Maintenance of flight and camp operations within determined health and safety protocols continue to be an ongoing focus

Puna

- Infection rates in Jujuy escalated in Q3 2020, impacting operations
- Suspended operations in September to manage camp occupancy, conduct testing and reduce transmission risk
- Mining and milling activities have ramped up back to pre-COVID-19 operating levels at beginning of October
- Strict protocols remain in place within the camp and operations

CDMP20: Reserve Case Summary



Reserve and Resource Highlights ⁽³⁾

- **4.0Moz Reserves**
 - 22% increase in Mineral Reserves
- **7.4Moz Measured & Indicated Resources**
 - 24% increase in M&I Mineral Resources
 - 96% of M&I Mineral Resources on SSR Mining 80%-owned land
- **3.1Moz Inferred Resources**
 - 58% increase in Inferred Mineral Resources

Reserve Case Highlights ⁽³⁾

- **\$1.7B NAV**
- **3.6Moz LOM production**
 - 3.3Moz sulfide gold production
 - 0.3Moz oxide gold production
 - 0.7Moz / 25% increase in LOM production (versus remaining years of 2016 technical report)
- **21-year mine life**
- **266koz/year average production in first 5 years**
- **\$865/oz average AISC in first 5 years**
- **\$224M average annual free cash flow in first 5 years**

Reserve Case Summary ⁽³⁾

Item	Unit	Reserve Case
Oxide Processed		
Heap Leach Quantity	kt	7,668
Gold Feed Grade	g/t	1.22
Sulfide Processed		
Quantity Milled	kt	51,084
Gold Feed Grade	g/t	2.24
Total Gold Produced		
Oxide – Gold	koz	256
Sulfide – Gold	koz	3,334
Total – Gold	koz	3,591
Oxide – Gold Recovery	%	73
Sulfide – Gold Recovery	%	91
5-Year Annual Average ⁽¹⁵⁾		
Total Gold Produced	oz	266
Production Costs ⁽¹⁶⁾	\$/oz Au	682
All-in Sustaining Costs (AISC) ⁽¹⁷⁾	\$/oz Au	865
Key Financial Results		
Production Costs ⁽¹⁶⁾	\$/oz Au	748
All-in Sustaining Costs (AISC) ⁽¹⁷⁾	\$/oz Au	945
Site Operating Costs	\$/t treated	47.09
After-Tax NPV (5%)	\$M	1,733
Mine Life	years	21

CDMP20: Alternate PEA Case Summary

Building a pathway to +300koz annual production in Turkey



Reserve and Resource Highlights ⁽³⁾

- **4.0Moz Reserves**
 - 22% increase in Mineral Reserves
- **7.4Moz Measured & Indicated Resources**
 - 24% increase in M&I Mineral Resources
 - 96% of M&I Mineral Resources on SSR Mining 80%-owned land
- **3.1Moz Inferred Resources**
 - 58% increase in Inferred Mineral Resources

PEA Case Highlights ^(3,18)

- **\$2.2Bn Potential NAV**
- **4.6Moz LOM production**
 - 3.7Moz sulfide gold production
 - 1.0Moz oxide gold production
 - 1.7Moz / 62% increase in LOM production (versus remaining years of 2016 technical report)
- **22-year mine life**
- **306koz/year average production in first 5 years**
- **\$886/oz average AISC in first 5 years**
- **\$249M average annual free cash flow in first 5 years**

PEA Case Summary ^(3,18)

Item	Unit	PEA Case
Oxide Processed		
Heap Leach Quantity	kt	25,008
Gold Feed Grade	g/t	1.69
Sulfide Processed		
Quantity Milled	kt	54,073
Gold Feed Grade	g/t	2.33
Total Gold Produced		
Oxide – Gold	koz	956
Sulfide – Gold	koz	3,691
Total – Gold	koz	4,646
Oxide – Gold Recovery	%	68
Sulfide – Gold Recovery	%	91
5-Year Annual Average ⁽¹⁵⁾		
Total Gold Produced	oz	306
Production Costs ⁽¹⁶⁾	\$/oz Au	701
All-in Sustaining Costs (AISC) ⁽¹⁷⁾	\$/oz Au	886
Key Financial Results		
Production Costs ⁽¹⁶⁾	\$/oz Au	726
All-in Sustaining Costs (AISC) ⁽¹⁷⁾	\$/oz Au	893
Site Operating Costs	\$/t treated	42.87
After-Tax NPV (5%)	\$M	2,164
Mine Life	years	22

Tailings Dam Disclosure



	Seabee		Marigold	Puna	Çöpler
	Triangle Lake TSF	East Lake TSF	Marigold Mine TSF	Pirquitas Tailings Dam	Çöpler Mine TSF
Status	Active	Active	Inactive	Inactive (water storage only)	Active
Date of Initial Operation	2004	1991	1989 (closed as of 1999)	2009 (ceased use as of May 2019)	2018
Raising Method	Modified Centerline	Concrete dams are centerline	Centerline	Downstream	Downstream
Current Maximum Height	19 meters	8 meters	22 meters	30 meters	75 meters
Current Storage Impoundment Volume	2.75 Mm ³	2.55 Mm ³	Area reclaimed and revegetated	8.8 Mm ³	1.86 Mm ³
Planned Tailings Storage Impoundment Volume in 5 Years	4.00 Mm ³	2.86 Mm ³	Facility permanently closed	Facility inactive	11.3 Mm ³
Most Recent Independent Expert Review	January 2019	January 2019	July 2007	September 2018	May 2019
Hazard Categorization based on Consequence of Failure	High	Significant	Low	High	Significant
Guideline for Classification System	Canadian Dam Association Consequence Classification Ratings for Dams	Canadian Dam Association Consequence Classification Ratings for Dams	Canadian Dam Association Consequence Classification Ratings for Dams	Canadian Dam Association Consequence Classification Ratings for Dams	World Bank Standards Canadian Dam Association Mining Association of Canada
Constructed using Upstream Method?	No	No	No	No	No
Formal Analysis of Downstream Impact on Environment?	Yes (in 2019)	Yes (in 2019)	Yes (in 2019)	Yes (in 2016)	Yes (in 2016)

1. Please see our news release dated January 19, 2021. Gold equivalent production and AISC are based on a 76:1 gold to silver ratio for 2021 guidance and 81:1 for 2020 production actuals. AISC is a non-GAAP financial measure. See "Cautionary Note Regarding Non-GAAP Measures" in this presentation.
2. Mineral Reserves and Mineral Resources for Marigold, Seabee, Puna, San Luis, Pitarrilla, and Amisk as at December 31, 2019. Çöpler, Ardich, Çakmaktepe, and Bayramdere as at November 2020. Mineral Reserves and Mineral Resources are shown on a 100% basis. Mineral Resources are stated inclusive of Mineral Reserves. Gold equivalent Mineral Reserves and Mineral Resources are gold and silver only (exclude copper, lead and zinc) and are based on a 70:1 gold to silver ratio.
3. These statements and estimates are extracted from, or based on, the Çöpler District Master Plan 2020 Technical Report, dated November 30, 2020.
4. Based on the aggregate of the "street" consolidated consensus estimates for 2021 for SSR Mining sourced from an average of BMO, Canaccord, CIBC, Cormark, NBF, PI Financial, Scotiabank and UBS research estimates as at January 15, 2021. Peer group estimates sourced from Bloomberg and Capital IQ. Estimates are intended to provide an "order of magnitude" indication for illustrative and comparison purposes only, and are not intended to be, and should not be treated as, a forecast, estimate or guidance made, adopted, confirmed or endorsed by SSR Mining. Peers include: Endeavour Mining, B2Gold, Yamana, Centerra, Evolution, Northern Star, Alamos, Equinox, Centamin, Eldorado, OceanaGold, IAMGOLD.
5. Free cash flow is a non-GAAP financial measure. Free cash flow per gold equivalent ounce is defined as operating cash flow less capex divided by gold equivalent production. Please see "Cautionary Note Regarding Non-GAAP Measures" in this presentation.
6. Consolidated cash balance, a non-GAAP financial measure, as at September 30, 2020. SSR Mining's consolidated cash included restricted cash of \$35 million and attributable cash held by joint ventures of \$4 million as at September 30, 2020. Debt balance is the sum of the short term and long-term portion of finance facility totaling \$228 million and the face value of 2019 convertible notes of \$230 million as disclosed in SSR Mining's unaudited condensed consolidated financial statements as at September 30, 2020. See "Cautionary Note Regarding Non-GAAP Measures" in this presentation.
7. AISC per payable ounce of gold and silver sold are non-GAAP financial measures. See "Cautionary Note Regarding Non-GAAP Measures" in this presentation.
8. Based on Alacer Gold and SSR Mining 2019 sustainability reports. Based on 2019 data.
9. Basic market capitalization as at January 15, 2021.
10. Based on the aggregate of the "street" consensus estimates; Capital IQ as at January 15, 2020. Consensus estimates are intended to provide an "order of magnitude" indication for illustrative and comparison purposes only, and are not intended to be, and should not be treated as, a forecast, estimate or guidance made, adopted, confirmed or endorsed by SSR Mining. EBITDA is a non-GAAP financial measure. See "Cautionary Note Regarding Non-GAAP Measures" in this presentation.
11. Production is reported on a consolidated basis and is a combination of historical SSR Mining and Alacer Gold production figures. Gold equivalent ounces have been established using the realized metal prices from 2013- 2020 in the respective years. Realized metal prices is a non GAAP financial measure. Please see "Cautionary Note Regarding Non GAAP Measures" in this presentation.
12. Source: Capital IQ as at January 15, 2021.
13. Please see our news release dated September 18, 2020. Gold equivalent production and AISC are based on a 76:1 gold to silver ratio. AISC is a non-GAAP financial measure. See "Cautionary Note Regarding Non-GAAP Measures" in this presentation.
14. See "NI 43 101 Technical Report Pre feasibility Study of the Chinchillas Silver Lead Zinc Project" dated May 15 2017 and available under our profile on the SEDAR website at www.sedar.com
15. 5-Year annual average is for the period January 2021 to December 2025.
16. Production costs are determined on a per ounce produced basis and do not consider the application of inventory movements or deferred stripping. Production costs do not equate to cash costs prepared under SSR Mining non-GAAP measures.
17. All in Sustaining Costs are determined on a per ounce produced basis and do not consider the application of inventory movements or deferred stripping. AISC do not equate to AISC prepared under SSR Mining non GAAP measures
18. The PEA Case is preliminary in nature and includes an economic analysis that is based, in part, on Inferred Mineral Resources. Inferred Mineral Resources are considered too speculative geologically for the application of economic considerations that would allow them to be categorized as Mineral Reserves, and there is no certainty that the results will be realized. Mineral Resources that are not Mineral Reserves do not have demonstrated economic viability.



SSR Mining Inc.
www.ssrmining.com
F. Edward Farid, Executive Vice President, Chief Corporate Development Officer
Brian Martin, Director, Corporate Development & Investor Relations
Telephone: +1 888.338.0046 or +1 604.689.3846
Email: invest@ssrmining.com